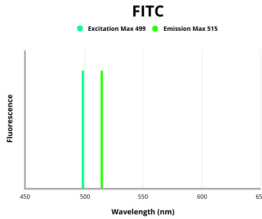


Cannabinoid receptor 1 (CNR1) Antibody (FITC)

Catalogue No.: abx341573



Cannabinoid receptor 1 (CNR1) Antibody (FITC) is a Rabbit Polyclonal antibody conjugated to FITC for the detection of Human CNR1.

Target:	Cannabinoid receptor 1 (CNR1)
Clonality:	Polyclonal
Reactivity:	Human
Host:	Rabbit
Recommended dilutions:	Optimal dilutions/concentrations should be determined by the end user.
Conjugation:	FITC
Excitation/Emission:	499/515
Laser Line:	488
Immunogen:	Recombinant Human Cannabinoid receptor 1 protein (1-116 AA)
Isotype:	IgG
Form:	Liquid
Purity:	> 95%
Purification:	Purified by Protein G chromatography.
Storage:	Aliquot and store at -20°C. Avoid repeated freeze/thaw cycles.

Datasheet

Version: 1.0.0

Revision date: 16 Oct 2024

UniProt Primary AC:	P21554 (UniProt , ExpASY)
Gene Symbol:	CNR1
KEGG:	hsa:1268
String:	9606.ENSP00000358513
Buffer:	0.01 M PBS, pH 7.4, 0.03% Proclin-300 and 50% glycerol.
Note:	This product is for research use only.

For Reference Only