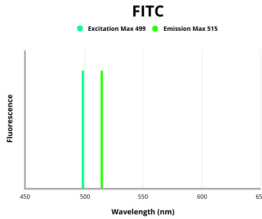


CD4-like protein Antibody (FITC)

Catalogue No.: abx345322



CD4-like protein Antibody (FITC) is a Rabbit Polyclonal antibody conjugated to FITC for the detection of Grass carp CD4-like protein.

Target:	CD4-like protein
Clonality:	Polyclonal
Reactivity:	Fish
Host:	Rabbit
Recommended dilutions:	Optimal dilutions/concentrations should be determined by the end user.
Conjugation:	FITC
Excitation/Emission:	499/515
Laser Line:	488
Immunogen:	Peptide sequence from Grass carp CD4-like protein (52-72 AA)
Isotype:	IgG
Form:	Liquid
Purity:	> 95%
Purification:	Purified by Protein G chromatography.
Storage:	Aliquot and store at -20°C. Avoid repeated freeze/thaw cycles.

Datasheet

Version: 1.0.0
Revision date: 31 Jan 2025



UniProt Primary AC: C7FF20 ([UniProt](#), [ExpASY](#))

Buffer: 0.01 M PBS, pH 7.4, 0.03% Proclin-300 and 50% glycerol.

Note: This product is for research use only.

For Reference Only