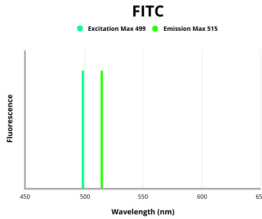


E3 ubiquitin-protein ligase RNF220 (RNF220) Antibody (FITC)

Catalogue No.: abx346475



E3 ubiquitin-protein ligase RNF220 (RNF220) Antibody (FITC) is a Rabbit Polyclonal antibody conjugated to FITC for the detection of Human RNF220.

| | |
|-------------------------------|---|
| Target: | E3 ubiquitin-protein ligase RNF220 (RNF220) |
| Clonality: | Polyclonal |
| Reactivity: | Human |
| Host: | Rabbit |
| Recommended dilutions: | Optimal dilutions/concentrations should be determined by the end user. |
| Conjugation: | FITC |
| Excitation/Emission: | 499/515 |
| Laser Line: | 488 |
| Immunogen: | Recombinant Human E3 ubiquitin-protein ligase RNF220 protein (384-472 AA) |
| Isotype: | IgG |
| Form: | Liquid |
| Purity: | > 95% |
| Purification: | Purified by Protein G chromatography. |
| Storage: | Aliquot and store at -20°C. Avoid repeated freeze/thaw cycles. |

Datasheet

Version: 1.0.0

Revision date: 05 Oct 2024

| | |
|----------------------------|---|
| UniProt Primary AC: | Q5VTB9 (UniProt , ExPASy) |
| Gene Symbol: | RNF220 |
| OMIM: | 616136 |
| KEGG: | hsa:55182 |
| Buffer: | 0.01 M PBS, pH 7.4, 0.03% Proclin-300 and 50% glycerol. |
| Note: | This product is for research use only. |

For Reference Only