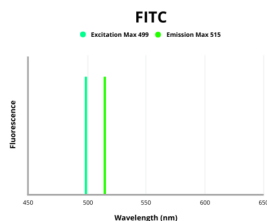


Phospholipid phosphatase-related protein type 1 (PLPPR1) Antibody (FITC)

Catalogue No.: abx340939



Phospholipid phosphatase-related protein type 1 (PLPPR1) Antibody (FITC) is a Rabbit Polyclonal antibody conjugated to FITC for the detection of Human PLPPR1.

Target: Phospholipid phosphatase-related protein type 1 (PLPPR1)

Clonality: Polyclonal

Reactivity: Human

Host: Rabbit

Recommended dilutions: Optimal dilutions/concentrations should be determined by the end user.

Conjugation: FITC

Excitation/Emission: 499/515

Laser Line: 488

Immunogen: Peptide sequence from Human Phospholipid phosphatase-related protein type 1 protein (51-66 AA)

Isotype: IgG

Form: Liquid

Purity: > 95%

Purification: Purified by Protein G chromatography.

Storage: Aliquot and store at -20°C. Avoid repeated freeze/thaw cycles.

Datasheet

Version: 1.0.0
Revision date: 28 Mar 2025



UniProt Primary AC: Q8TBJ4 ([UniProt](#), [ExpASY](#))

Gene Symbol: PLPPR1

KEGG: hsa:54886

String: [9606.ENSP00000364008](#)

Buffer: 0.01 M PBS, pH 7.4, 0.03% Proclin-300 and 50% glycerol.

Note: THIS PRODUCT IS FOR RESEARCH USE ONLY. NOT FOR USE IN DIAGNOSTIC, THERAPEUTIC OR COSMETIC PROCEDURES. NOT FOR HUMAN OR ANIMAL CONSUMPTION.

For Reference Only