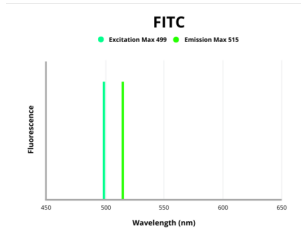


Diphthine methyl ester synthase (DPH5) Antibody (FITC)

Catalogue No.: abx348789



Diphthine methyl ester synthase (DPH5) Antibody (FITC) is a Rabbit Polyclonal antibody conjugated to FITC for the detection of Human DPH5.

Target:	Diphthine methyl ester synthase (DPH5)
Clonality:	Polyclonal
Reactivity:	Human
Host:	Rabbit
Recommended dilutions:	Optimal dilutions/concentrations should be determined by the end user.
Conjugation:	FITC
Excitation/Emission:	499/515
Laser Line:	488
Immunogen:	Recombinant Human Diphthine methyl ester synthase protein (138-235 AA)
Isotype:	IgG
Form:	Liquid
Purity:	> 95%
Purification:	Purified by Protein G chromatography.
Storage:	Aliquot and store at -20°C. Avoid repeated freeze/thaw cycles.

Datasheet

Version: 1.0.0

Revision date: 14 Jan 2025



UniProt Primary AC:	Q9H2P9 (UniProt , ExPASy)
Gene Symbol:	DPH5
KEGG:	hsa:51611
Buffer:	0.01 M PBS, pH 7.4, 0.03% Proclin-300 and 50% glycerol.
Note:	This product is for research use only.

For Reference Only