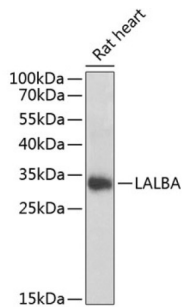
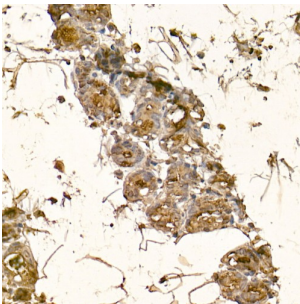


Alpha Lactalbumin (LALBA) Antibody

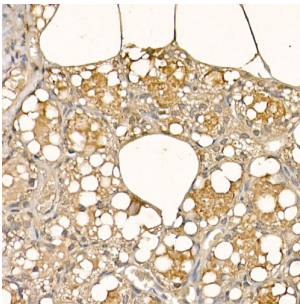
Catalogue No.: abx004759



Western blot analysis of lysates from rat heart, using LALBA Antibody at 1/1000 dilution. Secondary antibody: HRP-conjugated Goat anti-Rabbit IgG (H+L) at 1/10000 dilution. Lysates/proteins: 25 µg per lane. Blocking buffer: 3% nonfat dry milk in TBST. Exposure time: 60s.



Immunohistochemistry analysis of paraffin-embedded Mouse breast using LALBA Antibody at dilution of 1/100 (40x lens). High pressure antigen retrieval performed in 0.01 M Citrate buffer (pH 6.0) prior to IHC staining.



Immunohistochemistry analysis of paraffin-embedded Rat breast using LALBA Antibody at dilution of 1/100 (40x lens). High pressure antigen retrieval performed in 0.01 M Citrate buffer (pH 6.0) prior to IHC staining.

LALBA Antibody is a Rabbit Polyclonal antibody against LALBA. This gene encodes alpha-lactalbumin, a principal protein of milk. Alpha-lactalbumin forms the regulatory subunit of the lactose synthase (LS) heterodimer and beta 1,4-galactosyltransferase (beta4Gal-T1) forms the catalytic component. Together, these proteins enable LS to produce lactose by transferring galactose moieties to glucose. As a monomer, alpha-lactalbumin strongly binds calcium and zinc ions and may possess bactericidal or antitumor activity. A folding variant of alpha-lactalbumin, called HAMLET, likely induces apoptosis in tumor and immature cells.

Target: Alpha Lactalbumin (LALBA)

Clonality: Polyclonal

Reactivity: Mouse, Rat

Tested Applications: ELISA, WB, IHC

Host: Rabbit

Datasheet

Version: 2.0.0
Revision date: 12 Mar 2025



Recommended dilutions: ELISA: 1 µg/ml, WB: 1/500 - 1/2000, IHC-P: 1/50 - 1/200. Not tested in IHC-F. Optimal dilutions/concentrations should be determined by the end user.

Conjugation: Unconjugated

Immunogen: Recombinant fusion protein containing a sequence corresponding to amino acids 20-142 of human LALBA.

Isotype: IgG

Form: Liquid

Purification: Purified by affinity chromatography.

Storage: Aliquot and store at -20°C. Avoid repeated freeze/thaw cycles.

UniProt Primary AC: P00709 ([UniProt](#), [ExpASY](#))

GeneID: [3906](#)

NCBI Accession: NP_002280.1

KEGG: hsa:3906

String: [9606.ENSP00000301046](#)

Molecular Weight: Calculated MW: 16 kDa
Observed MW: 33 kDa

Buffer: PBS, pH 7.3, containing 0.02% sodium azide, 50% glycerol.

Concentration: > 0.2 mg/ml

Note: THIS PRODUCT IS FOR RESEARCH USE ONLY. NOT FOR USE IN DIAGNOSTIC, THERAPEUTIC OR COSMETIC PROCEDURES. NOT FOR HUMAN OR ANIMAL CONSUMPTION.