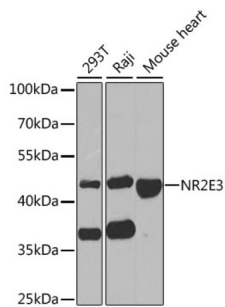


Photoreceptor Cell Specific Nuclear Receptor / PNR (NR2E3) Antibody

Catalogue No.: abx004760



Western blot analysis of extracts of various cell lines using NR2E3 Antibody (1/1000 dilution).

NR2E3 Antibody is a Rabbit Polyclonal antibody against NR2E3. This protein is part of a large family of nuclear receptor transcription factors involved in signaling pathways. Nuclear receptors have been shown to regulate pathways involved in embryonic development, as well as in maintenance of proper cell function in adults. Members of this family are characterized by discrete domains that function in DNA and ligand binding. This gene encodes a retinal nuclear receptor that is a ligand-dependent transcription factor. Defects in this gene are a cause of enhanced S cone syndrome. Alternatively spliced transcript variants encoding different isoforms have been identified.

Target:	Photoreceptor Cell Specific Nuclear Receptor / PNR (NR2E3)
Clonality:	Polyclonal
Reactivity:	Human, Mouse, Rat
Tested Applications:	WB
Host:	Rabbit
Recommended dilutions:	WB: 1/500 - 1/2000. Optimal dilutions/concentrations should be determined by the end user.
Conjugation:	Unconjugated
Immunogen:	Recombinant fusion protein corresponding to human NR2E3
Isotype:	IgG
Form:	Liquid
Purification:	Purified by affinity chromatography.
Storage:	Aliquot and store at -20°C. Avoid repeated freeze/thaw cycles.
UniProt Primary AC:	Q9Y5X4 (UniProt , ExPASy)

Datasheet

Version: 3.0.0
Revision date: 05 Feb 2025



Gene Symbol: NR2E3

GeneID: [10002](#)

NCBI Accession: NP_055064.1

String: [9606.ENSP00000482504](#)

Molecular Weight: Calculated MW: 39 kDa/44 kDa
Observed MW: 45 kDa

Buffer: PBS, pH 7.3, containing 0.02% sodium azide, 50% glycerol.

Concentration: 1 mg/ml

Note: This product is for research use only.

For Reference Only