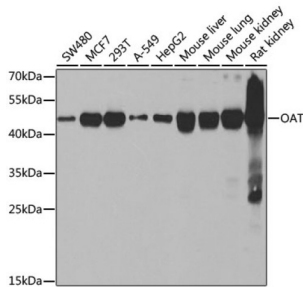
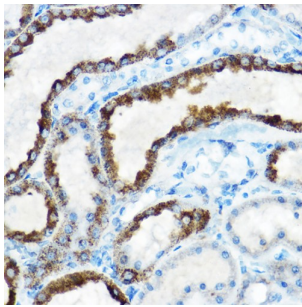


Ornithine Aminotransferase, Mitochondrial (OAT) Antibody

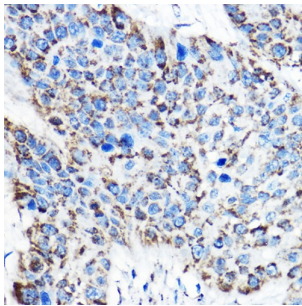
Catalogue No.: abx004761



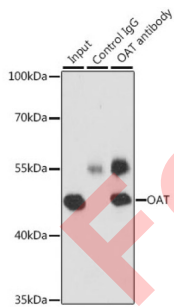
Western blot analysis of various lysates using OAT Antibody at 1/2000 dilution. Secondary antibody: HRP-conjugated Goat anti-Rabbit IgG (H+L) at 1/10000 dilution. Lysates/proteins: 25 µg per lane. Blocking buffer: 3% nonfat dry milk in TBST. Negative control (NC): RT4. Exposure time: 30s.



Immunohistochemistry analysis of paraffin-embedded Rat kidney using OAT Antibody at dilution of 1/100 (40x lens). High pressure antigen retrieval performed in 0.01 M Citrate buffer (pH 6.0) prior to IHC staining.



Immunohistochemistry analysis of paraffin-embedded Human esophageal cancer using OAT Antibody at dilution of 1/100 (40x lens). High pressure antigen retrieval performed in 0.01 M Citrate buffer (pH 6.0) prior to IHC staining.



Immunoprecipitation analysis of 200 µg extracts of MCF-7 cells, using 3 µg OAT antibody. Western blot was performed from the immunoprecipitate using OAT antibody at a dilution of 1/1000.

OAT Antibody is a Rabbit Polyclonal antibody against OAT. This gene encodes the mitochondrial enzyme ornithine aminotransferase, which is a key enzyme in the pathway that converts arginine and ornithine into the major excitatory and inhibitory neurotransmitters glutamate and GABA. Mutations that result in a deficiency of this enzyme cause the autosomal recessive eye disease Gyrate Atrophy. Alternatively spliced transcript variants encoding different isoforms have been described. Related pseudogenes have been defined on the X chromosome.

Target: Ornithine Aminotransferase, Mitochondrial (OAT)

Datasheet

Version: 3.0.0
Revision date: 13 Mar 2025



Clonality:	Polyclonal
Reactivity:	Human, Mouse, Rat
Tested Applications:	ELISA, WB, IHC, IP
Host:	Rabbit
Recommended dilutions:	ELISA: 1 µg/ml, WB: 1/500 - 1/2000, IHC-P: 1/50 - 1/200, IP: 0.5 µg - 4 µg antibody per 200 µg - 400 µg extracts of whole cells. Not tested in IHC-F. Optimal dilutions/concentrations should be determined by the end user.
Conjugation:	Unconjugated
Immunogen:	Recombinant fusion protein containing a sequence corresponding to amino acids 160-439 of human OAT.
Isotype:	IgG
Form:	Liquid
Purification:	Purified by affinity chromatography.
Storage:	Aliquot and store at -20°C. Avoid repeated freeze/thaw cycles.
UniProt Primary AC:	P04181 (UniProt , ExPASy)
Gene Symbol:	OAT
GeneID:	4942
NCBI Accession:	NP_000265.1
KEGG:	hsa:4942
String:	9606.ENSP00000357838
Molecular Weight:	Calculated MW: 49 kDa Observed MW: 49 kDa
Buffer:	PBS, pH 7.3, containing 0.02% sodium azide, 50% glycerol.
Concentration:	> 0.2 mg/ml
Note:	THIS PRODUCT IS FOR RESEARCH USE ONLY. NOT FOR USE IN DIAGNOSTIC, THERAPEUTIC OR COSMETIC PROCEDURES. NOT FOR HUMAN OR ANIMAL CONSUMPTION.