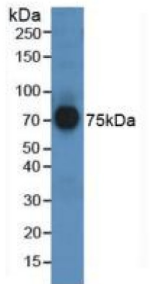
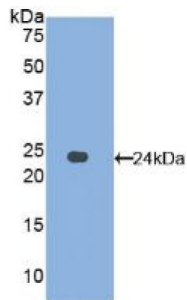


## Afamin (AFM) Antibody

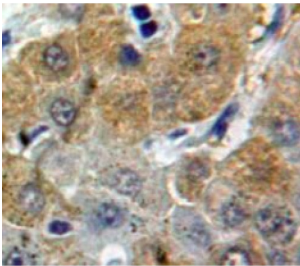
Catalogue No.: abx100033



Western blot analysis of Human Serum.



Western blot analysis of recombinant Human AFM.



IHC-P analysis of Liver tissue, with DAB staining.

Polyclonal Antibody to Afamin (AFM).

**Target:** Afamin (AFM)

**Clonality:** Polyclonal

**Reactivity:** Human

**Tested Applications:** WB, IHC, IF/ICC

**Host:** Rabbit

**Recommended dilutions:** WB: 0.01-2 µg/ml, IHC: 5-20 µg/ml, IF/ICC: 5-20 µg/ml. Optimal dilutions/concentrations should be determined by the end user.

**Conjugation:** Unconjugated

# Datasheet

Version: 2.0.0  
Revision date: 23 Feb 2025



|                            |  |
|----------------------------|--|
| <b>Immunogen:</b>          | AFM (Gln211-Glu403)  |
| <b>Form:</b>               | Liquid   |
| <b>Purification:</b>       | Purified by antigen-specific affinity chromatography, followed by Protein A affinity chromatography. |
| <b>Storage:</b>            | Aliquot and store at -20°C. Avoid repeated freeze/thaw cycles.                                       |
| <b>UniProt Primary AC:</b> | P43652 ( <a href="#">UniProt</a> , <a href="#">ExPASy</a> )  |
| <b>KEGG:</b>               | hsa:173  |
| <b>String:</b>             | <a href="#">9606.ENSP00000226355</a>   |
| <b>Buffer:</b>             | 0.01 M PBS, pH 7.4, containing 0.05% Proclin-300, 50% glycerol.                                      |
| <b>Note:</b>               | This product is for research use only.   |

For Reference Only