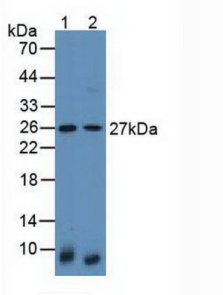
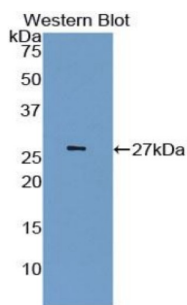


Latexin (LXN) Antibody

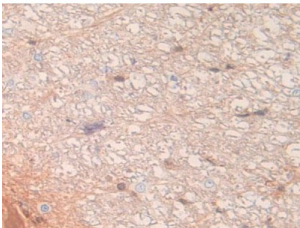
Catalogue No.: abx100110



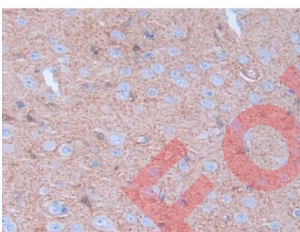
Western blot analysis of (1) Mouse Lung Tissue and (2) Human HeLa cells.



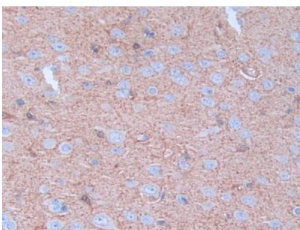
Western blot analysis of recombinant Rat LXN.



IHC-P analysis of Rat Spinal Cord Tissue, with DAB staining.



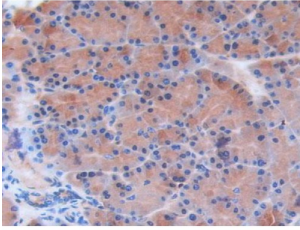
IHC-P analysis of Rat Brain Tissue, with DAB staining.



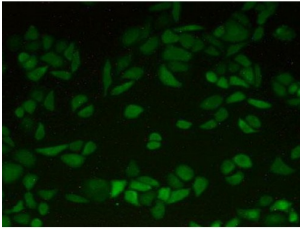
IHC-P analysis of Rat Brain Tissue, with DAB staining.

Datasheet

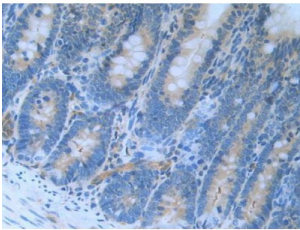
Version: 1.0.0
Revision date: 27 Apr 2025



IHC-P analysis of Rat Pancreas Tissue, with DAB staining.



IHC-P analysis of Human Hela Cells, with FITC staining.



IHC-P analysis of Rat Stomach Tissue, with DAB staining.

Polyclonal Antibody to Latexin (LXN).

Target: Latexin (LXN)

Clonality: Polyclonal

Reactivity: Rat

Tested Applications: WB, IHC, IF/ICC

Host: Rabbit

Recommended dilutions: WB: 0.01-2 µg/ml, IHC: 5-20 µg/ml, IF/ICC: 5-20 µg/ml. Optimal dilutions/concentrations should be determined by the end user.

Conjugation: Unconjugated

Immunogen: LXN (Met1-Glu223)

Datasheet

Version: 1.0.0

Revision date: 27 Apr 2025



Form:	Liquid
Purification:	Purified by antigen-specific affinity chromatography, followed by Protein A affinity chromatography.
Storage:	Aliquot and store at -20°C. Avoid repeated freeze/thaw cycles.
Buffer:	0.01 M PBS, pH 7.4, containing 0.05% Proclin-300, 50% glycerol.
Note:	THIS PRODUCT IS FOR RESEARCH USE ONLY. NOT FOR USE IN DIAGNOSTIC, THERAPEUTIC OR COSMETIC PROCEDURES. NOT FOR HUMAN OR ANIMAL CONSUMPTION.

For Reference Only