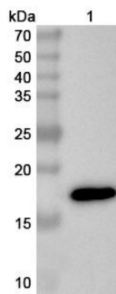


Datasheet

Version: 4.0.0
Revision date: 13 Apr 2025

Non-Secretory Ribonuclease (RNASE2) Antibody

Catalogue No.: abx377562



WB analysis of recombinant RNASE2 protein with RNASE2 antibody (1 µg/ml) and [abx457668](#) - Goat Anti-Rabbit IgG H&L Antibody (HRP) (0.1 µg/ml). Calculated MW: 18 kDa, Observed MW: 18 kDa.

Non-Secretory Ribonuclease (RNASE2) Antibody is a Rabbit polyclonal antibody for the detection of Human Non-Secretory Ribonuclease (RNASE2).

Target:	Non-Secretory Ribonuclease (RNASE2)
Clonality:	Polyclonal
Reactivity:	Human
Tested Applications:	ELISA, WB, IHC
Host:	Rabbit
Recommended dilutions:	ELISA: 1/4000-1/8000, WB: 1/1000-1/4000, IHC: 1/50-1/200. Optimal dilutions/concentrations should be determined by the end user.
Conjugation:	Unconjugated
Immunogen:	Recombinant Non-Secretory Ribonuclease (Lys28-Ile161) expressed in E. coli.
Isotype:	IgG
Form:	Liquid
Purification:	Purified by Antigen Affinity Chromatography.
Storage:	Store at 2-8 °C for 1-2 weeks. Aliquot and store at -20 °C or -80 °C for long-term storage. Avoid repeated freeze-thaw cycles.
UniProt Primary AC:	P10153 (UniProt , ExpASY)
GeneID:	6036

Datasheet

Version: 4.0.0
Revision date: 13 Apr 2025



NCBI Accession: NP_002925.1

KEGG: hsa:6036

Buffer: 0.01 M PBS, pH 7.4, 50% glycerol, 0.05% Proclin-300.

Concentration: 1.18 mg/ml

Note: THIS PRODUCT IS FOR RESEARCH USE ONLY. NOT FOR USE IN DIAGNOSTIC, THERAPEUTIC OR COSMETIC PROCEDURES. NOT FOR HUMAN OR ANIMAL CONSUMPTION.

For Reference Only