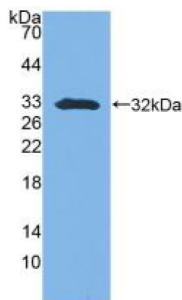
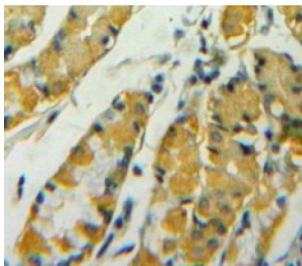


## 14-3-3 Protein Sigma (SFN) Antibody

Catalogue No.: abx100294



Western blot analysis of recombinant Mouse SFN.



IHC-P analysis of Stomach tissue, with DAB staining.

Polyclonal Antibody to 14-3-3 Protein Sigma (SFN).

**Target:** 14-3-3 Protein Sigma (SFN)**Clonality:** Polyclonal**Reactivity:** Mouse**Tested Applications:** WB, IHC, IF/ICC**Host:** Rabbit**Recommended dilutions:** WB: 0.01-2 µg/ml, IHC: 5-20 µg/ml, IF/ICC: 5-20 µg/ml. Optimal dilutions/concentrations should be determined by the end user.**Conjugation:** Unconjugated**Immunogen:** SFN (Met1-Ser249)**Form:** Liquid**Purification:** Purified by antigen-specific affinity chromatography, followed by Protein A affinity chromatography.**Storage:** Aliquot and store at -20°C. Avoid repeated freeze/thaw cycles.

# Datasheet

Version: 2.0.0

Revision date: 03 Feb 2025



**Buffer:** 0.01 M PBS, pH 7.4, containing 0.05% Proclin-300, 50% glycerol.

**Note:** This product is for research use only.

For Reference Only