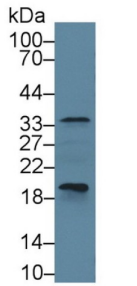
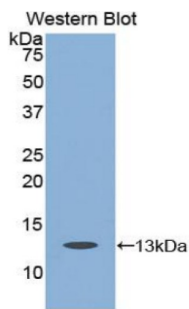


Caspase 6 (CASP6) Antibody

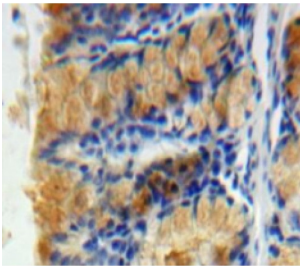
Catalogue No.: abx100461



Western blot analysis of Cow Pancreas lysate, using Cow CASP6 Antibody (1 µg/ml) and HRP-conjugated Goat Anti-Rabbit antibody ([abx400043](#), 0.2 µg/ml).



Western blot analysis of the recombinant protein.



IHC-P analysis of Bowels tissue, with DAB staining.

Polyclonal Antibody to Caspase 6 (CASP6).

Target: Caspase 6 (CASP6)

Clonality: Polyclonal

Reactivity: Cow

Tested Applications: WB, IHC, IF/ICC

Host: Rabbit

Recommended dilutions: WB: 0.5-2 µg/ml, IHC: 5-20 µg/ml, IF/ICC: 5-20 µg/ml. Optimal dilutions/concentrations should be determined by the end user.

Conjugation: Unconjugated

Datasheet

Version: 3.0.0
Revision date: 27 Nov 2024



| | |
|----------------------|--|
| Immunogen: | CASP6 (Ala194-Lys293) |
| Form: | Liquid |
| Purification: | Purified by antigen-specific affinity chromatography, followed by Protein A affinity chromatography. |
| Storage: | Aliquot and store at -20°C. Avoid repeated freeze/thaw cycles. |
| Buffer: | 0.01 M PBS, pH 7.4, containing 0.05% Proclin-300, 50% glycerol. |
| Note: | This product is for research use only. |

For Reference Only