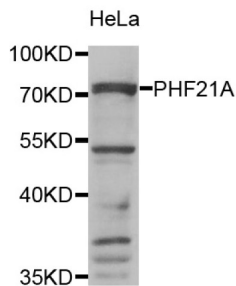


## PHD Finger Protein 21A (PHF21A) Antibody

Catalogue No.: abx004838



Western blot analysis of extracts of HeLa cells, using PHF21A antibody (abx004838) at 1/1000 dilution.

PHF21A Antibody is a Rabbit Polyclonal antibody against PHF21A. The PHF21A gene encodes BHC80, a component of a BRAF35 (MIM 605535)/histone deacetylase (HDAC; see MIM 601241) complex (BHC) that mediates repression of neuron-specific genes through the cis-regulatory element known as repressor element-1 (RE1) or neural restrictive silencer (NRS) (Hakimi et al., 2002).

<b>Target:</b>	PHD Finger Protein 21A (PHF21A)
<b>Clonality:</b>	Polyclonal
<b>Reactivity:</b>	Human, Mouse, Rat
<b>Tested Applications:</b>	WB
<b>Host:</b>	Rabbit
<b>Recommended dilutions:</b>	WB: 1/500 - 1/2000. Optimal dilutions/concentrations should be determined by the end user.
<b>Conjugation:</b>	Unconjugated
<b>Immunogen:</b>	Recombinant fusion protein containing a sequence corresponding to amino acids 461-680 of human PHF21A.
<b>Isotype:</b>	IgG
<b>Form:</b>	Liquid
<b>Purification:</b>	Purified by affinity chromatography.
<b>Storage:</b>	Aliquot and store at -20°C. Avoid repeated freeze/thaw cycles.
<b>UniProt Primary AC:</b>	Q96BD5 ( <a href="#">UniProt</a> , <a href="#">ExPASy</a> )
<b>Gene Symbol:</b>	PHF21A

# Datasheet

Version: 3.0.0  
Revision date: 06 Oct 2024



**GeneID:** [51317](#)

**NCBI Accession:** NP\_001095272.1

**KEGG:** hsa:51317

**String:** [9606.ENSP00000398824](#)

**Molecular Weight:** Calculated MW: 75 kDa  
Observed MW: 75 kDa

**Buffer:** PBS, pH 7.3, containing 0.02% sodium azide, 50% glycerol.

**Concentration:** > 0.2 mg/ml

**Note:** This product is for research use only.

For Reference Only