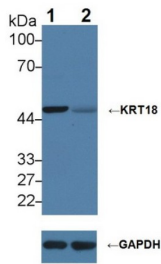
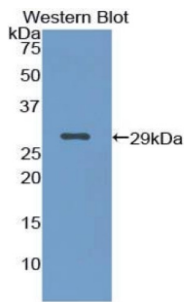


Keratin 18 (KRT18) Antibody

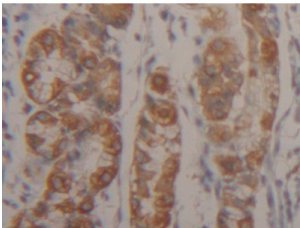
Catalogue No.: abx100818



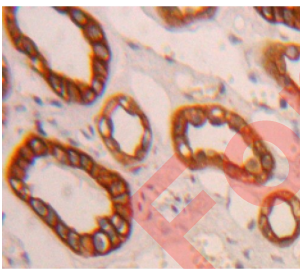
Western blot analysis of (1) Wild-type HeLa cell lysate, and (2) KRT18 knockout HeLa cell lysate, using Rabbit Anti-Human KRT18 Antibody (2 µg/ml) and HRP-conjugated Goat Anti-Mouse antibody ([abx400001](#), 0.2 µg/ml).



Western blot analysis of the recombinant protein.



IHC-P analysis of Human Stomach Tissue, with DAB staining.



IHC-P analysis of Kidney tissue, with DAB staining.

Polyclonal Antibody to Keratin 18 (KRT18).

Target: Keratin 18 (KRT18)

Clonality: Polyclonal

Reactivity: Human

Datasheet

Version: 1.0.0
Revision date: 15 Jan 2025



Tested Applications:	WB, IHC, IF/ICC
Host:	Rabbit
Recommended dilutions:	WB: 0.01-2 µg/ml, IHC: 5-20 µg/ml, IF/ICC: 5-20 µg/ml. Optimal dilutions/concentrations should be determined by the end user.
Conjugation:	Unconjugated
Immunogen:	KRT18 (Asp238-Leu396)
Form:	Liquid
Purification:	Purified by antigen-specific affinity chromatography, followed by Protein A affinity chromatography.
Storage:	Aliquot and store at -20°C. Avoid repeated freeze/thaw cycles.
UniProt Primary AC:	P05783 (UniProt , ExPASy)
KEGG:	hsa:3875
String:	9606.ENSP00000373487
Buffer:	0.01 M PBS, pH 7.4, containing 0.05% Proclin-300, 50% glycerol.
Note:	This product is for research use only.

For Reference Only