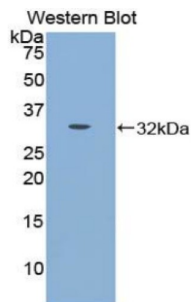
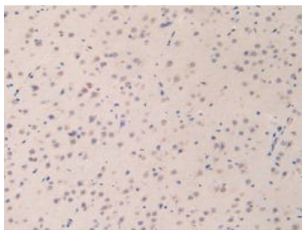


Cadherin 16 (CDH16) Antibody

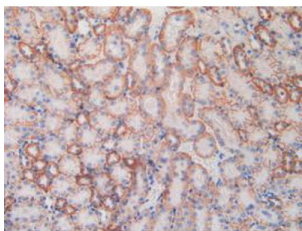
Catalogue No.: abx100897



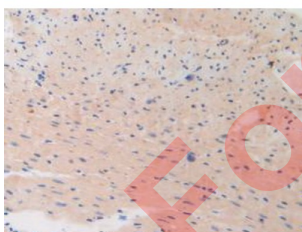
Western blot analysis of recombinant Mouse CDH16.



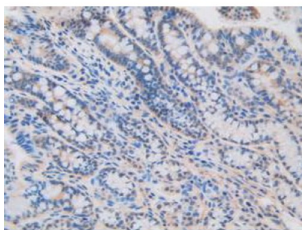
IHC-P analysis of Mouse Brain Tissue, with DAB staining.



IHC-P analysis of Mouse Kidney Tissue, with DAB staining.



IHC-P analysis of Mouse Heart Tissue, with DAB staining.



IHC-P analysis of Mouse Intestine Tissue, with DAB staining.

Datasheet

Version: 2.0.0
Revision date: 23 Feb 2025



Polyclonal Antibody to Cadherin 16 (CDH16).

Target: Cadherin 16 (CDH16)

Clonality: Polyclonal

Reactivity: Mouse

Tested Applications: WB, IHC, IF/ICC

Host: Rabbit

Recommended dilutions: WB: 0.01-2 µg/ml, IHC: 5-20 µg/ml, IF/ICC: 5-20 µg/ml. Optimal dilutions/concentrations should be determined by the end user.

Conjugation: Unconjugated

Immunogen: CDH16 (Pro353-Gly617)

Form: Liquid

Purification: Purified by antigen-specific affinity chromatography, followed by Protein A affinity chromatography.

Storage: Aliquot and store at -20°C. Avoid repeated freeze/thaw cycles.

Buffer: 0.01 M PBS, pH 7.4, containing 0.05% Proclin-300, 50% glycerol.

Note: This product is for research use only.

For Reference Only