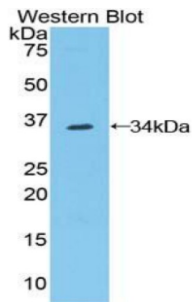
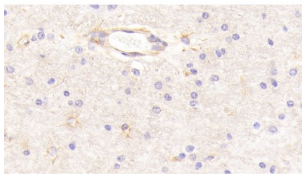


Contactin 1 (CNTN1) Antibody

Catalogue No.: abx100905



Western blot analysis of recombinant Human CNTN1 Protein.

IHC-P analysis of Human Cerebrum Tissue, with DAB staining, using Rabbit Anti-Human CNTN1 Antibody (20 µg/ml) and HRP-conjugated Goat Anti-Rabbit antibody ([abx400043](#), 2 µg/ml).

Polyclonal Antibody to Contactin 1.

Target:	Contactin 1 (CNTN1)
Clonality:	Polyclonal
Reactivity:	Human
Tested Applications:	WB, IHC, IF/ICC
Host:	Rabbit
Recommended dilutions:	WB: 0.5-2 µg/ml, IHC: 5-20 µg/ml, IF/ICC: 5-20 µg/ml. Optimal dilutions/concentrations should be determined by the end user.
Conjugation:	Unconjugated
Immunogen:	abx066110 - Recombinant CNTN1 (Tyr736-Leu1003) expressed in E. coli
Form:	Liquid
Purification:	Purified by antigen-specific affinity chromatography, followed by Protein A affinity chromatography.
Storage:	Aliquot and store at -20°C. Avoid repeated freeze/thaw cycles.

Datasheet

Version: 3.0.0
Revision date: 06 Oct 2024

UniProt Primary AC:	Q12860 (UniProt , ExPASy)
KEGG:	hsa:1272
String:	9606.ENSP00000447006
Buffer:	0.01 M PBS, pH 7.4, containing 0.05% Proclin-300, 50% glycerol.
Specificity:	Cross-reacts with Pig CNTN1.
Concentration:	1 mg/ml
Note:	This product is for research use only.

For Reference Only