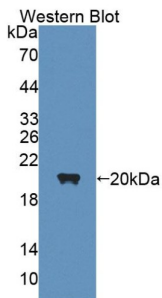


Datasheet

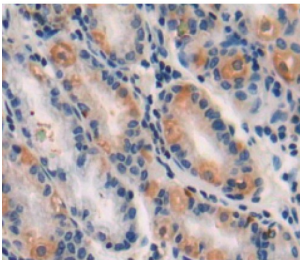
Version: 1.0.0
Revision date: 13 Mar 2025

Neuregulin 1 (NRG1) Antibody

Catalogue No.: abx101001



Western blot analysis of the recombinant protein.



IHC-P analysis of kidney tissue, with DAB staining.

Polyclonal Antibody to Neuregulin 1 (NRG1).

| | |
|-------------------------------|---|
| Target: | Neuregulin 1 (NRG1) |
| Clonality: | Polyclonal |
| Reactivity: | Rat |
| Tested Applications: | WB, IHC, IF/ICC |
| Host: | Rabbit |
| Recommended dilutions: | WB: 0.01-2 µg/ml, IHC: 5-20 µg/ml, IF/ICC: 5-20 µg/ml. Optimal dilutions/concentrations should be determined by the end user. |
| Conjugation: | Unconjugated |
| Immunogen: | NRG1 (Pro37-Thr169) |
| Form: | Liquid |
| Purification: | Purified by antigen-specific affinity chromatography, followed by Protein A affinity chromatography. |
| Storage: | Aliquot and store at -20°C. Avoid repeated freeze/thaw cycles. |

Datasheet

Version: 1.0.0

Revision date: 13 Mar 2025



UniProt Primary AC: P43322 ([UniProt](#), [ExPASy](#))

KEGG: rno:112400

String: [10116.ENSRNOP00000014268](#)

Buffer: 0.01 M PBS, pH 7.4, containing 0.05% Proclin-300, 50% glycerol.

Note: THIS PRODUCT IS FOR RESEARCH USE ONLY. NOT FOR USE IN DIAGNOSTIC, THERAPEUTIC OR COSMETIC PROCEDURES. NOT FOR HUMAN OR ANIMAL CONSUMPTION.

For Reference Only