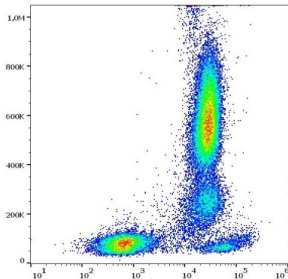
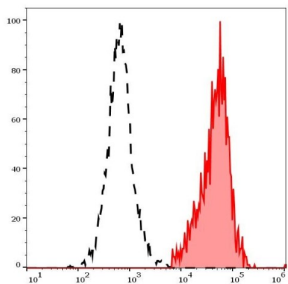


Fc Fragment of IgG, Low Affinity Ila, Receptor / CD32 (FCGR2A) Antibody (APC)

Catalogue No.: abx347221



Flow cytometry surface staining analysis of human peripheral whole blood stained using APC-conjugated Fc Fragment of IgG, Low Affinity Ila, Receptor / CD32 (FCGR2A) Antibody (10 µl/100 µl of peripheral whole blood).



Flow cytometric separation analysis of Human CD32 positive lymphocytes (red histogram) and CD32 negative lymphocytes (black histogram) using APC-conjugated Fc Fragment of IgG, Low Affinity Ila, Receptor / CD32 (FCGR2A) Antibody.

Fc Fragment of IgG, Low Affinity Ila, Receptor / CD32 (FCGR2A) Antibody (APC) is an APC-conjugated mouse monoclonal for Fc Fragment of IgG, Low Affinity Ila, Receptor / CD32.

Target:	Fc Fragment of IgG, Low Affinity Ila, Receptor / CD32 (FCGR2A)
Clonality:	Monoclonal
Reactivity:	Human
Tested Applications:	FCM
Host:	Mouse
Recommended dilutions:	FCM: 10 µl reagent / 100 µl of whole blood or 10 ⁶ cells in a suspension Optimal dilutions/concentrations should be determined by the end user.
Conjugation:	APC
Immunogen:	Purified glycosylated recombinant Human FCGR2A
Isotype:	IgG ₁ Kappa
Purification:	Purified by size-exclusion chromatography.

Datasheet

Version: 2.0.0
Revision date: 12 Mar 2025



Storage: Store at 2-8°C in the dark. Do not freeze.

UniProt Primary AC: P12318 ([UniProt](#), [ExpASY](#))

Gene Symbol: FCGR2A

GeneID: [2212](#)

Buffer: PBS, pH 7.4, containing 15 mM sodium azide

Note: THIS PRODUCT IS FOR RESEARCH USE ONLY. NOT FOR USE IN DIAGNOSTIC, THERAPEUTIC OR COSMETIC PROCEDURES. NOT FOR HUMAN OR ANIMAL CONSUMPTION.

For Reference Only