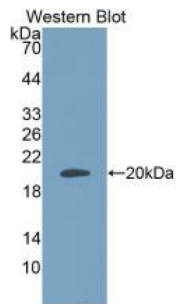


Adrenomedullin (ADM) Antibody

Catalogue No.: abx101057



Western blot analysis of recombinant Human ADM.

ADM Antibody is a Mouse Monoclonal against ADM.

Target: Adrenomedullin (ADM)**Clonality:** Monoclonal**Reactivity:** Human**Tested Applications:** WB, IHC, IF/ICC**Host:** Mouse**Recommended dilutions:** WB: 0.01-5 µg/ml, IHC: 5-30 µg/ml, IF/ICC: 5-30 µg/ml. Optimal dilutions/concentrations should be determined by the end user.**Conjugation:** Unconjugated**Immunogen:** Ala22-Gly147**Isotype:** IgG₁ Kappa**Form:** Liquid**Purification:** Purified by Protein A and Protein G affinity chromatography.**Storage:** Aliquot and store at -20°C. Avoid repeated freeze/thaw cycles.**UniProt Primary AC:** P35318 ([UniProt](#), [ExPASy](#))**KEGG:** hsa:133**String:** [9606.ENSP00000436607](#)

Datasheet

Version: 4.0.0
Revision date: 11 Mar 2025



Buffer: 0.01 M PBS, pH 7.4, containing 0.05% Proclin-300, 50% glycerol.

Note: THIS PRODUCT IS FOR RESEARCH USE ONLY. NOT FOR USE IN DIAGNOSTIC, THERAPEUTIC OR COSMETIC PROCEDURES. NOT FOR HUMAN OR ANIMAL CONSUMPTION.

For Reference Only