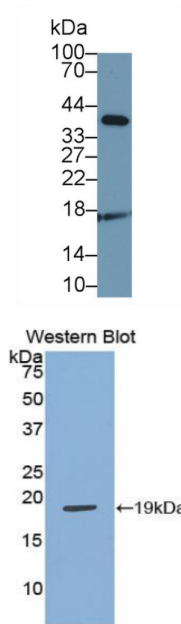


Adrenomedullin (ADM) Antibody

Catalogue No.: abx101060



Western blot analysis of Dog Cerebrum lysate, using Dog ADM Antibody (1 µg/ml) and HRP-conjugated Goat Anti-Rabbit antibody ([abx400043](#), 0.2 µg/ml).

Western blot analysis of the recombinant protein.

Polyclonal Antibody to ADM (ADM).

Target:	Adrenomedullin (ADM)
Clonality:	Polyclonal
Reactivity:	Dog
Tested Applications:	WB, IHC, IF/ICC
Host:	Rabbit
Recommended dilutions:	WB: 0.5-2 µg/ml, IHC: 5-20 µg/ml, IF/ICC: 5-20 µg/ml. Optimal dilutions/concentrations should be determined by the end user.
Conjugation:	Unconjugated
Immunogen:	ADM (Arg31-Lys187)
Form:	Liquid
Purification:	Purified by antigen-specific affinity chromatography, followed by Protein A affinity chromatography.
Storage:	Aliquot and store at -20°C. Avoid repeated freeze/thaw cycles.

Datasheet

Version: 3.0.0

Revision date: 31 Dec 2024



UniProt Primary AC: O77559 ([UniProt](#), [ExPASy](#))

KEGG: cfa:403817

String: [9612.ENSCAFP00000011183](#)

Buffer: 0.01 M PBS, pH 7.4, containing 0.05% Proclin-300, 50% glycerol.

Note: This product is for research use only.

For Reference Only