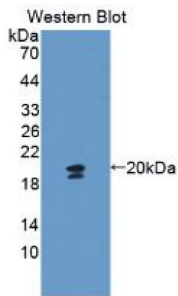
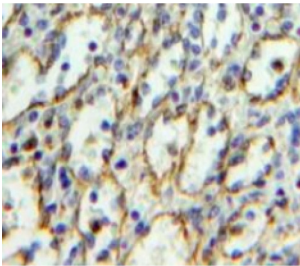


## Glycophorin A (GYPA) Antibody

Catalogue No.: abx101089



Western blot analysis of recombinant Mouse GYPA.



IHC-P analysis of Spleen tissue, with DAB staining.

Polyclonal Antibody to Glycophorin A (GYPA).

**Target:** Glycophorin A (GYPA)

**Clonality:** Polyclonal

**Reactivity:** Mouse

**Tested Applications:** WB, IHC, IF/ICC

**Host:** Rabbit

**Recommended dilutions:** WB: 0.01-2 µg/ml, IHC: 5-20 µg/ml, IF/ICC: 5-20 µg/ml. Optimal dilutions/concentrations should be determined by the end user.

**Conjugation:** Unconjugated

**Immunogen:** GYPA (Met1-Val108)

**Form:** Liquid

**Purification:** Purified by antigen-specific affinity chromatography, followed by Protein A affinity chromatography.

**Storage:** Aliquot and store at -20°C. Avoid repeated freeze/thaw cycles.

# Datasheet

Version: 3.0.0

Revision date: 23 Feb 2025



**Buffer:** 0.01 M PBS, pH 7.4, containing 0.05% Proclin-300, 50% glycerol.

**Concentration:** 0.7 mg/ml

**Note:** This product is for research use only.

For Reference Only