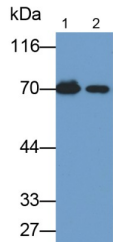


## Albumin (ALB) Antibody

Catalogue No.: abx132754



Western blot analysis of Human serum (Lane 1) and plasma (Lane 2) using Albumin (ALB) Antibody (0.01 µg/ml) and HRP-conjugated Goat Anti-Mouse antibody ([abx400001](#), 0.2 µg/ml).

Albumin (ALB) Antibody is a Rabbit Polyclonal antibody for the detection of Albumin (ALB).

<b>Target:</b>	Albumin (ALB)
<b>Clonality:</b>	Polyclonal
<b>Reactivity:</b>	Human
<b>Tested Applications:</b>	WB, IHC, IF/ICC
<b>Host:</b>	Rabbit
<b>Recommended dilutions:</b>	Optimal dilutions/concentrations should be determined by the end user.
<b>Conjugation:</b>	Unconjugated
<b>Isotype:</b>	IgG
<b>Form:</b>	Liquid
<b>Purification:</b>	Antigen-specific affinity chromatography followed by Protein A affinity chromatography.
<b>Storage:</b>	Aliquot and store at -20°C. Avoid repeated freeze/thaw cycles.
<b>Buffer:</b>	PBS, pH 7.4, containing 0.02% NaN <sub>3</sub> , 50% glycerol.
<b>Concentration:</b>	500 µg/ml
<b>Note:</b>	This product is for research use only.