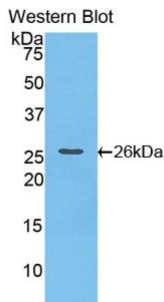
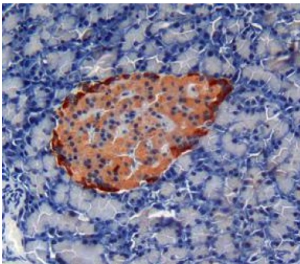


## Cardiotrophin 1 (CTF1) Antibody

Catalogue No.: abx101143



Western blot analysis of the recombinant protein.



IHC-P analysis of pancreas tissue, with DAB staining.

Polyclonal Antibody to Cardiotrophin 1 (CT1).

<b>Target:</b>	Cardiotrophin 1 (CTF1)
<b>Clonality:</b>	Polyclonal
<b>Reactivity:</b>	Rat
<b>Tested Applications:</b>	WB, IHC, IF/ICC
<b>Host:</b>	Rabbit
<b>Recommended dilutions:</b>	WB: 0.01-2 µg/ml, IHC: 5-20 µg/ml, IF/ICC: 5-20 µg/ml. Optimal dilutions/concentrations should be determined by the end user.
<b>Conjugation:</b>	Unconjugated
<b>Immunogen:</b>	CT1 (Met1-Ala203)
<b>Form:</b>	Liquid
<b>Purification:</b>	Purified by antigen-specific affinity chromatography, followed by Protein A affinity chromatography.
<b>Storage:</b>	Aliquot and store at -20°C. Avoid repeated freeze/thaw cycles.

# Datasheet

Version: 2.0.0  
Revision date: 23 Feb 2025



**UniProt Primary AC:** Q63086 ([UniProt](#), [ExPASy](#))

**KEGG:** rno:29201

**String:** [10116.ENSRNOP00000025646](#)

**Buffer:** 0.01 M PBS, pH 7.4, containing 0.05% Proclin-300, 50% glycerol.

**Note:** This product is for research use only.

For Reference Only