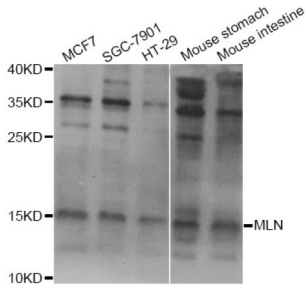
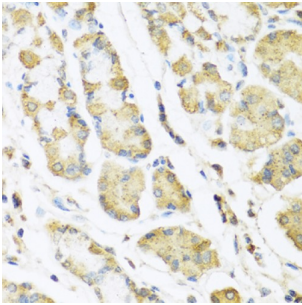


## Promotilin (MLN) Antibody

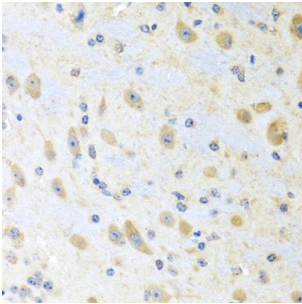
Catalogue No.: abx004883



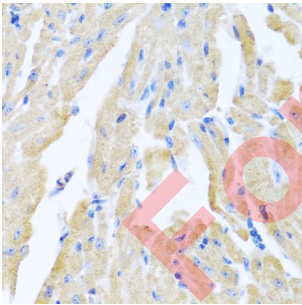
Western blot analysis of extracts of various cell lines, using MLN Antibody (abx004883) at 1/1000 dilution.



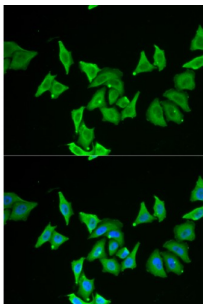
Immunohistochemistry of paraffin-embedded human stomach using MLN antibody (abx004883) at dilution of 1/100 (40x lens).



Immunohistochemistry of paraffin-embedded mouse brain using MLN antibody (abx004883) at dilution of 1/100 (40x lens).



Immunohistochemistry of paraffin-embedded mouse heart using MLN antibody (abx004883) at dilution of 1/100 (40x lens).



Immunofluorescence analysis of U2OS cells using MLN antibody (abx004883). Blue: DAPI for nuclear staining.

# Datasheet

Version: 4.0.0  
Revision date: 09 Jan 2025



MLN Antibody is a Rabbit Polyclonal antibody against MLN. This gene encodes a small peptide hormone that is secreted by cells of the small intestine to regulate gastrointestinal contractions and motility. Proteolytic processing of the secreted protein produces the mature peptide and a byproduct referred to as motilin-associated peptide (MAP). Three transcript variants encoding different preproprotein isoforms but the same mature peptide have been found for this gene.

<b>Target:</b>	Promotilin (MLN)
<b>Clonality:</b>	Polyclonal
<b>Reactivity:</b>	Human, Mouse
<b>Tested Applications:</b>	WB, IHC
<b>Host:</b>	Rabbit
<b>Recommended dilutions:</b>	WB: 1/500 - 1/2000, IHC-P: 1/50 - 1/100. Not tested in IHC-F. Optimal dilutions/concentrations should be determined by the end user.
<b>Conjugation:</b>	Unconjugated
<b>Immunogen:</b>	Recombinant fusion protein containing a sequence corresponding to amino acids 26-115 of human MLN.
<b>Isotype:</b>	IgG
<b>Form:</b>	Liquid
<b>Purification:</b>	Purified by affinity chromatography.
<b>Storage:</b>	Aliquot and store at -20°C. Avoid repeated freeze/thaw cycles.
<b>UniProt Primary AC:</b>	P12872 ( <a href="#">UniProt</a> , <a href="#">ExPASy</a> )
<b>Gene Symbol:</b>	MLN
<b>GeneID:</b>	<a href="#">4295</a>
<b>NCBI Accession:</b>	NP_002409.1
<b>KEGG:</b>	hsa:4295
<b>String:</b>	<a href="#">9606.ENSP00000388825</a>
<b>Molecular Weight:</b>	Calculated MW: 13 kDa Observed MW: 13 kDa
<b>Buffer:</b>	PBS, pH 7.3, containing 0.02% sodium azide, 50% glycerol.

# Datasheet

Version: 4.0.0

Revision date: 09 Jan 2025



**Concentration:** > 0.2 mg/ml

**Note:** This product is for research use only.

For Reference Only