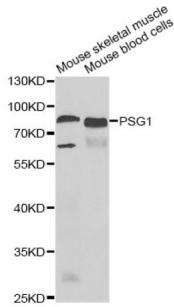
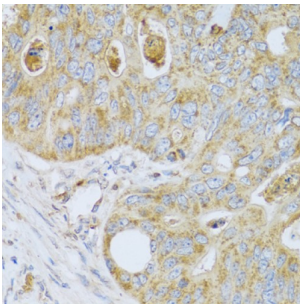


Pregnancy Specific Beta-1-Glycoprotein 1 (PSG1) Antibody

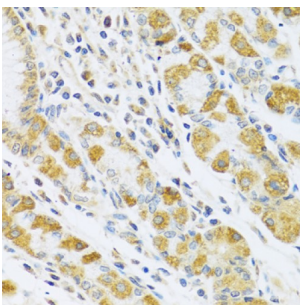
Catalogue No.: abx004894



Western blot analysis of extracts of various cell lines, using PSG1 antibody (abx004894) at 1/1000 dilution.



Immunohistochemistry of paraffin-embedded human colon carcinoma using PSG1 antibody (abx004894) at dilution of 1/100 (40x lens).



Immunohistochemistry of paraffin-embedded human stomach using PSG1 antibody (abx004894) at dilution of 1/100 (40x lens).

PSG1 Antibody is a Rabbit Polyclonal antibody against PSG1. The human placenta is a multihormonal endocrine organ that produces hormones, enzymes, and other molecules that support fetal survival and development. Pregnancy-specific beta-1-glycoprotein (PSBG, PSG) is a major product of the syncytiotrophoblast, reaching concentrations of 100 to 290 mg/l at term in the serum of pregnant women (Horne et al., 1976).

Target: Pregnancy Specific Beta-1-Glycoprotein 1 (PSG1)

Clonality: Polyclonal

Reactivity: Human

Tested Applications: WB, IHC, IF/ICC

Host: Rabbit

Recommended dilutions: WB: 1/500 - 1/2000, IHC-P: 1/50 - 1/100, IF/ICC: 1/50 - 1/200. Not tested in IHC-F. Optimal dilutions/concentrations should be determined by the end user.

Datasheet

Version: 3.0.0
Revision date: 28 Dec 2024



Conjugation:	Unconjugated
Immunogen:	Recombinant fusion protein containing a sequence corresponding to amino acids 180-419 of human PSG1.
Isotype:	IgG
Form:	Liquid
Purification:	Purified by affinity chromatography.
Storage:	Aliquot and store at -20°C. Avoid repeated freeze/thaw cycles.
UniProt Primary AC:	P11464 (UniProt , ExPASy)
Gene Symbol:	PSG1
GeneID:	5669
NCBI Accession:	NP_001171754.1
KEGG:	hsa:5669
String:	9606.ENSP00000308970
Molecular Weight:	Calculated MW: 47 kDa Observed MW: 55-72 kDa
Buffer:	PBS, pH 7.3, containing 0.02% sodium azide, 50% glycerol.
Concentration:	> 0.2 mg/ml
Note:	This product is for research use only.

For Reference Only