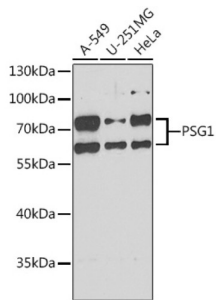
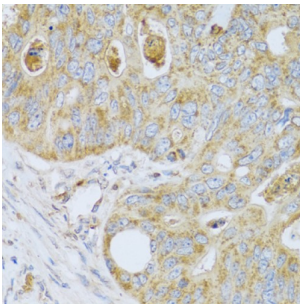


## Pregnancy Specific Beta-1-Glycoprotein 1 (PSG1) Antibody

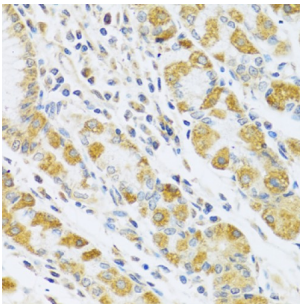
Catalogue No.: abx004894



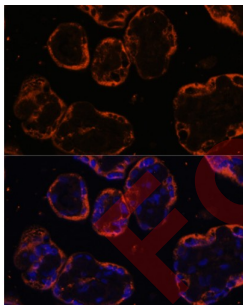
Western blot analysis of various lysates using PSG1 Antibody at 1/1000 dilution. Secondary antibody: HRP-conjugated Goat anti-Rabbit IgG (H+L) at 1/10000 dilution. Lysates/proteins: 25 µg per lane. Blocking buffer: 3% nonfat dry milk in TBST. Exposure time: 90s.



Immunohistochemistry analysis of paraffin-embedded Human colon carcinoma using PSG1 Antibody at dilution of 1/100 (40x lens). Microwave antigen retrieval performed in 0.01 M PBS Buffer (pH 7.2) prior to IHC staining.



Immunohistochemistry analysis of paraffin-embedded Human stomach using PSG1 Antibody at dilution of 1/100 (40x lens). Microwave antigen retrieval performed in 0.01 M PBS Buffer (pH 7.2) prior to IHC staining.



Immunofluorescence analysis of paraffin-embedded human placenta using PSG1 Antibody at dilution of 1/100. Secondary antibody: Cy3-conjugated Goat anti-Rabbit IgG (H+L) at 1/500 dilution. Blue: DAPI for nuclear staining.

PSG1 Antibody is a Rabbit Polyclonal antibody against PSG1. The human placenta is a multihormonal endocrine organ that produces hormones, enzymes, and other molecules that support fetal survival and development. Pregnancy-specific beta-1-glycoprotein (PSBG, PSG) is a major product of the syncytiotrophoblast, reaching concentrations of 100 to 290 mg/l at term in the serum of pregnant women (Horne et al., 1976).

**Target:** Pregnancy Specific Beta-1-Glycoprotein 1 (PSG1)

**Clonality:** Polyclonal

# Datasheet

Version: 5.0.0  
Revision date: 05 Mar 2025



<b>Reactivity:</b>	Human
<b>Tested Applications:</b>	ELISA, WB, IHC, IF/ICC
<b>Host:</b>	Rabbit
<b>Recommended dilutions:</b>	ELISA: 1 µg/ml, WB: 1/500 - 1/2000, IHC-P: 1/50 - 1/100, IF/ICC: 1/50 - 1/200. Not tested in IHC-F. Optimal dilutions/concentrations should be determined by the end user.
<b>Conjugation:</b>	Unconjugated
<b>Immunogen:</b>	Recombinant fusion protein containing a sequence corresponding to amino acids 180-419 of human PSG1.
<b>Isotype:</b>	IgG
<b>Form:</b>	Liquid
<b>Purification:</b>	Purified by affinity chromatography.
<b>Storage:</b>	Aliquot and store at -20°C. Avoid repeated freeze/thaw cycles.
<b>UniProt Primary AC:</b>	P11464 ( <a href="#">UniProt</a> , <a href="#">ExPASy</a> )
<b>Gene Symbol:</b>	PSG1
<b>GeneID:</b>	<a href="#">5669</a>
<b>NCBI Accession:</b>	NP_001171754.1
<b>KEGG:</b>	hsa:5669
<b>String:</b>	<a href="#">9606.ENSP00000308970</a>
<b>Molecular Weight:</b>	Calculated MW: 47 kDa Observed MW: 55-72 kDa
<b>Buffer:</b>	PBS, pH 7.3, containing 0.02% sodium azide, 50% glycerol.
<b>Concentration:</b>	> 0.2 mg/ml
<b>Note:</b>	THIS PRODUCT IS FOR RESEARCH USE ONLY. NOT FOR USE IN DIAGNOSTIC, THERAPEUTIC OR COSMETIC PROCEDURES. NOT FOR HUMAN OR ANIMAL CONSUMPTION.