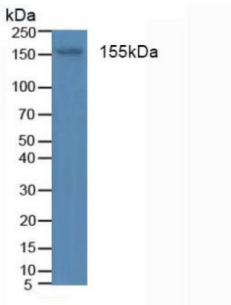
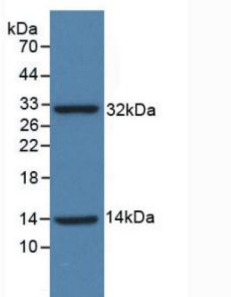


Insulin Receptor (INSR) Antibody

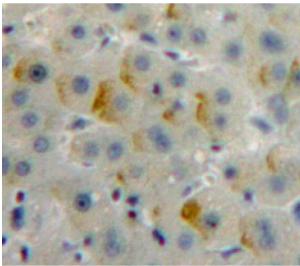
Catalogue No.: abx101319



Western blot analysis of Human Blood Cells.



Western blot analysis of recombinant Human INSR.



IHC-P analysis of Liver tissue, with DAB staining.

Polyclonal Antibody to Insulin Receptor (INSR).

Target: Insulin Receptor (INSR)

Clonality: Polyclonal

Reactivity: Human

Tested Applications: WB, IHC, IF/ICC

Host: Rabbit

Recommended dilutions: WB: 1-5 $\mu\text{g/ml}$, IHC: 5-20 $\mu\text{g/ml}$, IF/ICC: 5-20 $\mu\text{g/ml}$. Optimal dilutions/concentrations should be determined by the end user.

Conjugation: Unconjugated

Datasheet

Version: 3.0.0
Revision date: 13 Mar 2025



Immunogen:	abx067263 - Recombinant INSR (Thr1024-Phe1298) expressed in E. coli
Form:	Liquid
Purification:	Purified by antigen-specific affinity chromatography, followed by Protein A affinity chromatography.
Storage:	Aliquot and store at -20°C. Avoid repeated freeze/thaw cycles.
UniProt Primary AC:	P06213 (UniProt , ExPASy)
Gene Symbol:	INSR
GeneID:	3643
OMIM:	125853
HGNC:	6091
KEGG:	hsa:3643
Ensembl:	ENSG00000171105
String:	9606.ENSP00000303830
Enzyme Commission Number:	EC 2.7.10.1
Buffer:	0.01 M PBS, pH 7.4, containing 0.05% Proclin-300, 50% glycerol.
Note:	THIS PRODUCT IS FOR RESEARCH USE ONLY. NOT FOR USE IN DIAGNOSTIC, THERAPEUTIC OR COSMETIC PROCEDURES. NOT FOR HUMAN OR ANIMAL CONSUMPTION.

For Reference Only