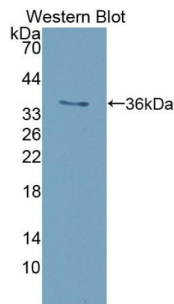


Datasheet

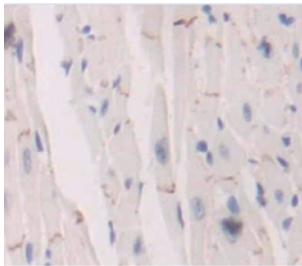
Version: 1.0.0
Revision date: 22 Dec 2024

Insulin Receptor (INSR) Antibody

Catalogue No.: abx101322



Western blot analysis of recombinant Mouse INSR.



IHC-P analysis of Mouse Tissue, with DAB staining.

Polyclonal Antibody to Insulin Receptor (INSR).

Target:	Insulin Receptor (INSR)
Clonality:	Polyclonal
Reactivity:	Mouse
Tested Applications:	WB, IHC, IF/ICC
Host:	Rabbit
Recommended dilutions:	WB: 0.5-2 µg/ml, IHC: 5-20 µg/ml, IF/ICC: 5-20 µg/ml. Optimal dilutions/concentrations should be determined by the end user.
Conjugation:	Unconjugated
Immunogen:	abx067267 - Recombinant INSR (Leu1101-Ser1372) expressed in E. coli
Form:	Liquid
Purification:	Purified by antigen-specific affinity chromatography, followed by Protein A affinity chromatography.
Storage:	Aliquot and store at -20°C. Avoid repeated freeze/thaw cycles.

Datasheet

Version: 1.0.0

Revision date: 22 Dec 2024



UniProt Primary AC: P15208 ([UniProt](#), [ExPASy](#))

KEGG: mmu:16337

String: [10090.ENSMUSP00000088837](#)

Buffer: 0.01 M PBS, pH 7.4, containing 0.05% Proclin-300, 50% glycerol.

Note: This product is for research use only.

For Reference Only