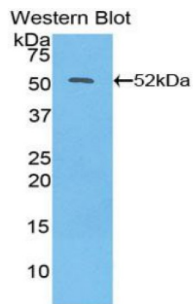
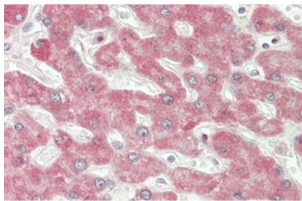


Interferon Beta (IFN β) Antibody

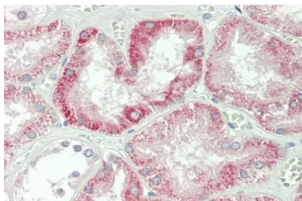
Catalogue No.: abx101324



Western blot analysis of the recombinant protein.



IHC-P analysis of Human Liver Tissue, with HE staining.



IHC-P analysis of Human Kidney Tissue, with HE staining.

Polyclonal Antibody to Interferon Beta (IFN β).

Target: Interferon Beta (IFN β)

Clonality: Polyclonal

Reactivity: Human

Tested Applications: WB, IHC, IF/ICC

Host: Rabbit

Recommended dilutions: WB: 0.5-2 μ g/ml, IHC: 5-20 μ g/ml, IF/ICC: 5-20 μ g/ml. Optimal dilutions/concentrations should be determined by the end user.

Conjugation: Unconjugated

Datasheet

Version: 2.0.0

Revision date: 22 Dec 2024



Immunogen:	abx067345 - Recombinant IFN β (Met22-Asn187) expressed in E. coli
Form:	Liquid
Purification:	Purified by antigen-specific affinity chromatography, followed by Protein A affinity chromatography.
Storage:	Aliquot and store at -20°C. Avoid repeated freeze/thaw cycles.
UniProt Primary AC:	P01574 (UniProt , ExPASy)
KEGG:	hsa:3456
String:	9606.ENSP00000369581
Buffer:	0.01 M PBS, pH 7.4, containing 0.05% Proclin-300, 50% glycerol.
Note:	This product is for research use only.

For Reference Only