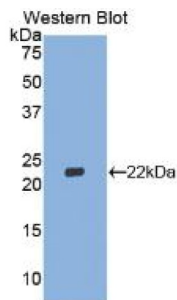


Interferon Beta (IFN β) Antibody

Catalogue No.: abx101326



Western blot analysis of recombinant Chicken IFN β .

Polyclonal Antibody to Interferon Beta (IFN β).

Target:	Interferon Beta (IFN β)
Clonality:	Polyclonal
Reactivity:	Chicken
Tested Applications:	WB, IHC, IF/ICC
Host:	Rabbit
Recommended dilutions:	WB: 0.5-2 μ g/ml, IHC: 5-20 μ g/ml, IF/ICC: 5-20 μ g/ml. Optimal dilutions/concentrations should be determined by the end user.
Conjugation:	Unconjugated
Immunogen:	IFN β (Ser27-Gln203)
Form:	Liquid
Purification:	Purified by antigen-specific affinity chromatography, followed by Protein A affinity chromatography.
Storage:	Aliquot and store at -20°C. Avoid repeated freeze/thaw cycles.
UniProt Primary AC:	Q90873 (UniProt , ExpASY)
KEGG:	gga:554219
String:	9031.ENSGALP00000038687
Buffer:	0.01 M PBS, pH 7.4, containing 0.05% Proclin-300, 50% glycerol.

Datasheet

Version: 1.0.0

Revision date: 31 Dec 2024



Note: This product is for research use only.

For Reference Only