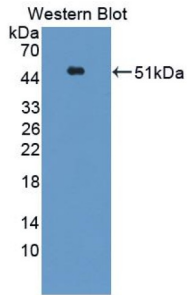


## Interferon Beta (IFN $\beta$ ) Antibody

Catalogue No.: abx101332



Western blot analysis of the recombinant protein.

Polyclonal Antibody to Interferon Beta (IFN $\beta$ ).

**Target:** Interferon Beta (IFN $\beta$ )

**Clonality:** Polyclonal

**Reactivity:** Horse

**Tested Applications:** WB, IHC, IF/ICC

**Host:** Rabbit

**Recommended dilutions:** WB: 0.5-2  $\mu$ g/ml, IHC: 5-20  $\mu$ g/ml, IF/ICC: 5-20  $\mu$ g/ml. Optimal dilutions/concentrations should be determined by the end user.

**Conjugation:** Unconjugated

**Immunogen:** IFN $\beta$  (Val22-Asn186).

**Form:** Liquid

**Purification:** Purified by antigen-specific affinity chromatography, followed by Protein A affinity chromatography.

**Storage:** Aliquot and store at -20°C. Avoid repeated freeze/thaw cycles.

**Buffer:** 0.01 M PBS, pH 7.4, containing 0.05% Proclin-300, 50% glycerol.

**Note:** This product is for research use only.