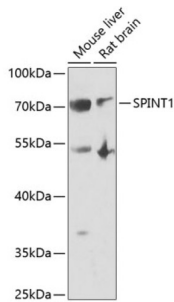
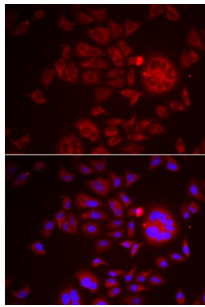


## Serine Peptidase Inhibitor, Kunitz Type 1 (SPINT1) Antibody

Catalogue No.: abx004905



Western blot analysis of various lysates using SPINT1 Antibody at 1/1000 dilution. Secondary antibody: HRP-conjugated Goat anti-Rabbit IgG (H+L) at 1/10000 dilution. Lysates/proteins: 25 µg per lane. Blocking buffer: 3% nonfat dry milk in TBST. Exposure time: 90s.



Immunofluorescence analysis of HeLa cells using SPINT1 Antibody. Secondary antibody: Cy3-conjugated Goat anti-Rabbit IgG (H+L) at 1/500 dilution. Blue: DAPI for nuclear staining.

SPINT1 Antibody is a Rabbit Polyclonal antibody against SPINT1. The protein encoded by this gene is a member of the Kunitz family of serine protease inhibitors. The protein is a potent inhibitor specific for HGF activator and is thought to be involved in the regulation of the proteolytic activation of HGF in injured tissues. Alternative splicing results in multiple variants encoding different isoforms.

<b>Target:</b>	Serine Peptidase Inhibitor, Kunitz Type 1 (SPINT1)
<b>Clonality:</b>	Polyclonal
<b>Reactivity:</b>	Human, Mouse, Rat
<b>Tested Applications:</b>	ELISA, WB, IF/ICC
<b>Host:</b>	Rabbit
<b>Recommended dilutions:</b>	ELISA: 1 µg/ml, WB: 1/500 - 1/2000, IF/ICC: 1/50 - 1/100. Optimal dilutions/concentrations should be determined by the end user.
<b>Conjugation:</b>	Unconjugated
<b>Immunogen:</b>	Recombinant fusion protein containing a sequence corresponding to amino acids 234-513 of human SPINT1.
<b>Isotype:</b>	IgG

# Datasheet

Version: 5.0.0  
Revision date: 05 Mar 2025



<b>Form:</b>	Liquid
<b>Purification:</b>	Purified by affinity chromatography.
<b>Storage:</b>	Aliquot and store at -20°C. Avoid repeated freeze/thaw cycles.
<b>UniProt Primary AC:</b>	O43278 ( <a href="#">UniProt</a> , <a href="#">ExPASy</a> )
<b>Gene Symbol:</b>	SPINT1
<b>GeneID:</b>	<a href="#">6692</a>
<b>NCBI Accession:</b>	NP_003701.1
<b>Molecular Weight:</b>	Calculated MW: 58 kDa Observed MW: 70 kDa
<b>Buffer:</b>	PBS, pH 7.3, containing 0.02% sodium azide, 50% glycerol.
<b>Concentration:</b>	> 0.2 mg/ml
<b>Note:</b>	THIS PRODUCT IS FOR RESEARCH USE ONLY. NOT FOR USE IN DIAGNOSTIC, THERAPEUTIC OR COSMETIC PROCEDURES. NOT FOR HUMAN OR ANIMAL CONSUMPTION.

For Reference Only