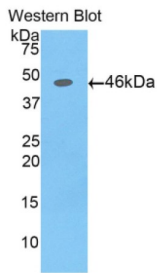


# Datasheet

Version: 2.0.0  
Revision date: 24 Nov 2024

## Alpha Fetoprotein (AFP) Antibody

Catalogue No.: abx101421



Western blot analysis of the recombinant protein.

Polyclonal Antibody to Alpha-Fetoprotein (aFP).

<b>Target:</b>	Alpha Fetoprotein (AFP)
<b>Clonality:</b>	Polyclonal
<b>Reactivity:</b>	Pig
<b>Tested Applications:</b>	WB, IHC, IF/ICC
<b>Host:</b>	Rabbit
<b>Recommended dilutions:</b>	WB: 0.5-2 µg/ml, IHC: 5-20 µg/ml, IF/ICC: 5-20 µg/ml. Optimal dilutions/concentrations should be determined by the end user.
<b>Conjugation:</b>	Unconjugated
<b>Immunogen:</b>	aFP (Leu46-Thr210)
<b>Form:</b>	Liquid
<b>Purification:</b>	Purified by antigen-specific affinity chromatography, followed by Protein A affinity chromatography.
<b>Storage:</b>	Aliquot and store at -20°C. Avoid repeated freeze/thaw cycles.
<b>UniProt Primary AC:</b>	Q8MJ76 ( <a href="#">UniProt</a> , <a href="#">ExPASy</a> )
<b>KEGG:</b>	ssc:397586
<b>String:</b>	<a href="#">9823.ENSSSCP00000009550</a>
<b>Buffer:</b>	0.01 M PBS, pH 7.4, containing 0.05% Proclin-300, 50% glycerol.

# Datasheet

Version: 2.0.0

Revision date: 24 Nov 2024



**Note:** This product is for research use only.

For Reference Only