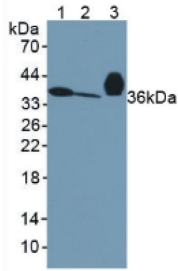
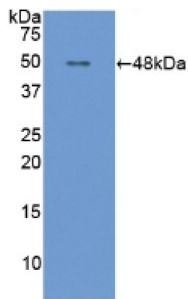


Apolipoprotein E (APOE) Antibody

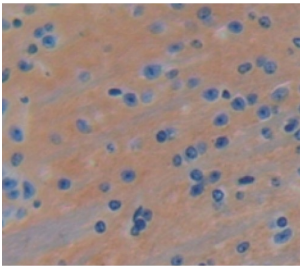
Catalogue No.: abx101448



Western blot analysis of (1) Mouse Serum, (2) Mouse Liver Tissue and (3) Rat Serum.



Western blot analysis of recombinant Mouse APOE.



IHC-P analysis of Mouse Tissue, with DAB staining.

Polyclonal Antibody to Apolipoprotein E (APOE).

Target: Apolipoprotein E (APOE)

Clonality: Polyclonal

Reactivity: Mouse

Tested Applications: WB, IHC, IF/ICC

Host: Rabbit

Recommended dilutions: WB: 0.01-2 µg/ml, IHC: 5-20 µg/ml, IF/ICC: 5-20 µg/ml. Optimal dilutions/concentrations should be determined by the end user.

Conjugation: Unconjugated

Datasheet

Version: 3.0.0
Revision date: 23 Feb 2025



Immunogen:	APOE (Thr14-Lys167)
Form:	Liquid
Purification:	Purified by antigen-specific affinity chromatography, followed by Protein A affinity chromatography.
Storage:	Aliquot and store at -20°C. Avoid repeated freeze/thaw cycles.
UniProt Primary AC:	P08226 (UniProt , ExPASy)
KEGG:	mmu:11816
String:	10090.ENSMUSP00000133302
Buffer:	0.01 M PBS, pH 7.4, containing 0.05% Proclin-300, 50% glycerol.
Note:	This product is for research use only.

For Reference Only