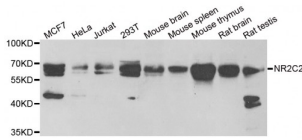


Nuclear Receptor Subfamily 2 Group C Member 2 (NR2C2) Antibody

Catalogue No.: abx004915



Western blot analysis of extracts of various cell lines, using NR2C2 antibody (abx004915) at 1/1000 dilution.

NR2C2 Antibody is a Rabbit Polyclonal antibody against NR2C2. This gene encodes a protein that belongs to the nuclear hormone receptor family. Members of this family act as ligand-activated transcription factors and function in many biological processes such as development, cellular differentiation and homeostasis. The activated receptor/ligand complex is translocated to the nucleus where it binds to hormone response elements of target genes. The protein encoded by this gene plays a role in protecting cells from oxidative stress and damage induced by ionizing radiation. The lack of a similar gene in mouse results in growth retardation, severe spinal curvature, subfertility, premature aging, and prostatic intraepithelial neoplasia (PIN) development. Alternative splicing results in multiple transcript variants encoding different isoforms.

Target:	Nuclear Receptor Subfamily 2 Group C Member 2 (NR2C2)
Clonality:	Polyclonal
Reactivity:	Human, Mouse, Rat
Tested Applications:	WB
Host:	Rabbit
Recommended dilutions:	WB: 1/1000 - 1/5000. Optimal dilutions/concentrations should be determined by the end user.
Conjugation:	Unconjugated
Immunogen:	Recombinant fusion protein containing a sequence corresponding to amino acids 240-380 of human NR2C2.
Isotype:	IgG
Form:	Liquid
Purification:	Purified by affinity chromatography.
Storage:	Aliquot and store at -20°C. Avoid repeated freeze/thaw cycles.

Datasheet

Version: 2.0.0
Revision date: 16 Jul 2024



UniProt Primary AC: P49116 ([UniProt](#), [ExPASy](#))

Gene Symbol: NR2C2

GeneID: [7182](#)

NCBI Accession: NP_003289.2

KEGG: hsa:7182

String: [9606.ENSP00000483059](#)

Molecular Weight: Calculated MW: 65 kDa
Observed MW: 67 kDa

Buffer: PBS, pH 7.3, containing 0.01% thimerosal, 50% glycerol.

Concentration: > 0.2 mg/ml

Note: This product is for research use only.

For Reference Only