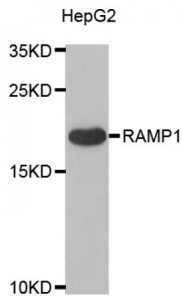


Receptor Activity Modifying Protein 1 (RAMP1) Antibody

Catalogue No.: abx004940



Western blot analysis of extracts of HepG2 cells, using RAMP1 antibody (abx004940) at 1/1000 dilution.

RAMP1 Antibody is a Rabbit Polyclonal antibody against RAMP1. The protein encoded by this gene is a member of the RAMP family of single-transmembrane-domain proteins, called receptor (calcitonin) activity modifying proteins (RAMPs). RAMPs are type I transmembrane proteins with an extracellular N terminus and a cytoplasmic C terminus. RAMPs are required to transport calcitonin-receptor-like receptor (CRLR) to the plasma membrane. CRLR, a receptor with seven transmembrane domains, can function as either a calcitonin-gene-related peptide (CGRP) receptor or an adrenomedullin receptor, depending on which members of the RAMP family are expressed. In the presence of this (RAMP1) protein, CRLR functions as a CGRP receptor. The RAMP1 protein is involved in the terminal glycosylation, maturation, and presentation of the CGRP receptor to the cell surface.

Target:	Receptor Activity Modifying Protein 1 (RAMP1)
Clonality:	Polyclonal
Reactivity:	Human, Mouse, Rat
Tested Applications:	WB, IF/ICC
Host:	Rabbit
Recommended dilutions:	WB: 1/100 - 1/500, IF/ICC: 1/50 - 1/200. Optimal dilutions/concentrations should be determined by the end user.
Conjugation:	Unconjugated
Immunogen:	A synthetic peptide corresponding to a sequence within amino acids 21-120 of human RAMP1.
Isotype:	IgG
Form:	Liquid
Purification:	Purified by affinity chromatography.
Storage:	Aliquot and store at -20°C. Avoid repeated freeze/thaw cycles.

Datasheet

Version: 2.0.0
Revision date: 01 Sep 2024



UniProt Primary AC: O60894 ([UniProt](#), [ExPASy](#))

Gene Symbol: RAMP1

GeneID: [10267](#)

NCBI Accession: NP_005846.1

KEGG: hsa:10267

String: [9606.ENSP00000254661](#)

Molecular Weight: Calculated MW: 17 kDa
Observed MW: 17 kDa

Buffer: PBS, pH 7.3, containing 0.02% sodium azide, 50% glycerol.

Concentration: > 0.2 mg/ml

Note: This product is for research use only.

For Reference Only