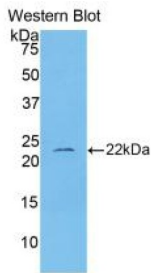
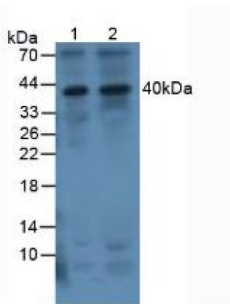


## Interleukin 1 Beta (IL1b) Antibody

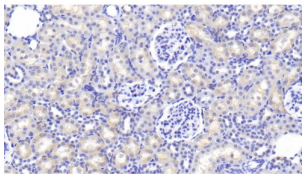
Catalogue No.: abx101765



Western blot analysis of recombinant Rat IL1b Protein.



Western blot analysis of (1) Human 293T Cells and (2) Human Jurkat Cells.



IHC-P analysis of Rat Kidney Tissue, with DAB staining, using Rabbit Anti-Rat IL1b Antibody (20 µg/ml) and HRP-conjugated Goat Anti-Rabbit antibody ([abx400043](#), 2 µg/ml).

Polyclonal Antibody to Interleukin 1 Beta (IL1b).

**Target:** Interleukin 1 Beta (IL1b)

**Clonality:** Polyclonal

**Reactivity:** Rat

**Tested Applications:** WB, IHC, IF/ICC

**Host:** Rabbit

**Recommended dilutions:** WB: 0.01-2 µg/ml, IHC: 5-20 µg/ml, IF/ICC: 5-20 µg/ml. Optimal dilutions/concentrations should be determined by the end user.

**Conjugation:** Unconjugated

# Datasheet

Version: 1.0.0  
Revision date: 14 Jan 2025



<b>Immunogen:</b>	<a href="#">abx067392</a> - Recombinant IL1b (Val117-Ser268) expressed in E. coli
<b>Form:</b>	Liquid
<b>Purification:</b>	Purified by antigen-specific affinity chromatography, followed by Protein A affinity chromatography.
<b>Storage:</b>	Aliquot and store at -20°C. Avoid repeated freeze/thaw cycles.
<b>UniProt Primary AC:</b>	Q63264 ( <a href="#">UniProt</a> , <a href="#">ExPASy</a> )
<b>Buffer:</b>	0.01 M PBS, pH 7.4, containing 0.05% Proclin-300, 50% glycerol.
<b>Specificity:</b>	Cross-reacts with Human IL1b.
<b>Concentration:</b>	0.59 mg/ml
<b>Note:</b>	This product is for research use only.

For Reference Only