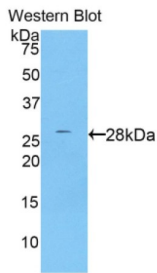
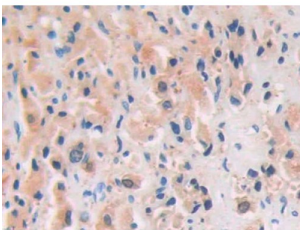


Protease, Serine 8 (PRSS8) Antibody

Catalogue No.: abx101911



Western blot analysis of the recombinant protein.



IHC-P analysis of Human Prostate cancer Tissue, with DAB staining.

Polyclonal Antibody to Protease, Serine 8 (PRSS8).

Target:	Protease, Serine 8 (PRSS8)
Clonality:	Polyclonal
Reactivity:	Human
Tested Applications:	WB, IHC, IF/ICC
Host:	Rabbit
Recommended dilutions:	WB: 0.5-2 µg/ml, IHC: 5-20 µg/ml, IF/ICC: 5-20 µg/ml. Optimal dilutions/concentrations should be determined by the end user.
Conjugation:	Unconjugated
Immunogen:	PRSS8 (Ala33-Thr272)
Form:	Liquid
Purification:	Purified by antigen-specific affinity chromatography, followed by Protein A affinity chromatography.
Storage:	Aliquot and store at -20°C. Avoid repeated freeze/thaw cycles.

Datasheet

Version: 2.0.0

Revision date: 23 Dec 2024



UniProt Primary AC: Q16651 ([UniProt](#), [ExpASY](#))

KEGG: hsa:5652

String: [9606.ENSP00000319730](#)

Buffer: 0.01 M PBS, pH 7.4, containing 0.05% Proclin-300, 50% glycerol.

Note: This product is for research use only.

For Reference Only