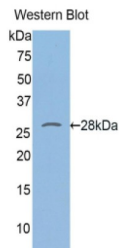
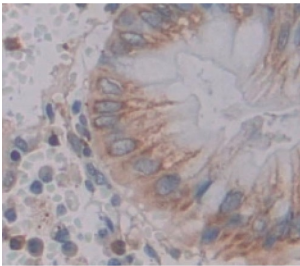


## Toll Like Receptor 1 (TLR1) Antibody

Catalogue No.: abx102057



Western blot analysis of the recombinant protein.



IHC-P analysis of Human Tissue, with DAB staining.

Polyclonal Antibody to Toll Like Receptor 1 (TLR1).

<b>Target:</b>	Toll Like Receptor 1 (TLR1)
<b>Clonality:</b>	Polyclonal
<b>Reactivity:</b>	Human
<b>Tested Applications:</b>	WB, IHC, IF/ICC
<b>Host:</b>	Rabbit
<b>Recommended dilutions:</b>	WB: 0.01-2 µg/ml, IHC: 5-20 µg/ml, IF/ICC: 5-20 µg/ml. Optimal dilutions/concentrations should be determined by the end user.
<b>Conjugation:</b>	Unconjugated
<b>Immunogen:</b>	TLR1 (Asp605-Lys785)
<b>Form:</b>	Liquid
<b>Purification:</b>	Purified by antigen-specific affinity chromatography, followed by Protein A affinity chromatography.
<b>Storage:</b>	Aliquot and store at -20°C. Avoid repeated freeze/thaw cycles.

# Datasheet

Version: 3.0.0  
Revision date: 30 Mar 2025



**UniProt Primary AC:** Q15399 ([UniProt](#), [ExpASY](#))

**Gene Symbol:** TLR2

**GeneID:** [7096](#)

**OMIM:** [601194](#)

**HGNC:** 11847

**KEGG:** hsa:7096

**Ensembl:** ENSG00000174125

**String:** [9606.ENSP00000354932](#)

**Buffer:** 0.01 M PBS, pH 7.4, containing 0.05% Proclin-300, 50% glycerol.

**Note:** THIS PRODUCT IS FOR RESEARCH USE ONLY. NOT FOR USE IN DIAGNOSTIC, THERAPEUTIC OR COSMETIC PROCEDURES. NOT FOR HUMAN OR ANIMAL CONSUMPTION.

For Reference Only