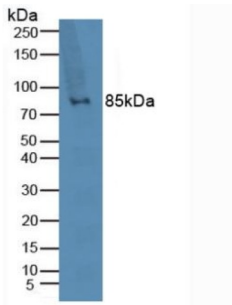
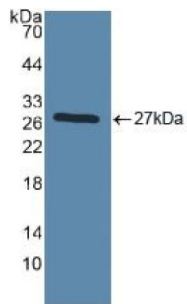


Toll Like Receptor 2 (TLR2) Antibody

Catalogue No.: abx102058



Western blot analysis of Human Lymphocytes Cells.



Western blot analysis of recombinant Human TLR2.

Polyclonal Antibody to Toll Like Receptor 2 (TLR2).

- Target:** Toll Like Receptor 2 (TLR2)
- Clonality:** Polyclonal
- Reactivity:** Human
- Tested Applications:** WB, IHC, IF/ICC
- Host:** Rabbit
- Recommended dilutions:** WB: 0.5-2 µg/ml, IHC: 5-20 µg/ml, IF/ICC: 5-20 µg/ml. Optimal dilutions/concentrations should be determined by the end user.
- Conjugation:** Unconjugated
- Immunogen:** TLR2 (Pro47-Gly245)
- Form:** Liquid
- Purification:** Purified by antigen-specific affinity chromatography, followed by Protein A affinity chromatography.
- Storage:** Aliquot and store at -20°C. Avoid repeated freeze/thaw cycles.

Datasheet

Version: 2.0.0
Revision date: 21 Nov 2024



UniProt Primary AC: O60603 ([UniProt](#), [ExPASy](#))

Gene Symbol: TLR2

GeneID: [7097](#)

OMIM: [246300](#)

NCBI Accession: NP_003255.2

HGNC: 11848

KEGG: hsa:7097

Ensembl: ENSG00000137462

String: [9606.ENSP00000260010](#)

Buffer: 0.01 M PBS, pH 7.4, containing 0.05% Proclin-300, 50% glycerol.

Concentration: 0.56 mg/ml

Note: This product is for research use only.

For Reference Only