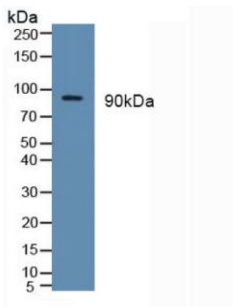
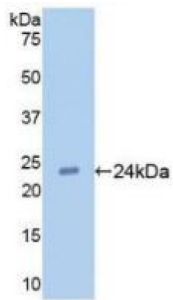


Toll Like Receptor 2 (TLR2) Antibody

Catalogue No.: abx102061



Western blot analysis of Human Milk.



Western blot analysis of recombinant Human TLR2.

Toll Like Receptor 2 Antibody is a Mouse Monoclonal against Toll Like Receptor 2.

Target:	Toll Like Receptor 2 (TLR2)
Clonality:	Monoclonal
Reactivity:	Human
Tested Applications:	WB, IHC, IF/ICC
Host:	Mouse
Recommended dilutions:	WB: 0.01-2 µg/ml, IHC: 5-20 µg/ml, IF/ICC: 5-20 µg/ml. Optimal dilutions/concentrations should be determined by the end user.
Conjugation:	Unconjugated
Immunogen:	TLR2 (Pro47-Gly245)
Isotype:	IgG
Form:	Liquid
Purification:	Purified by Protein A and Protein G affinity chromatography.

Datasheet

Version: 3.0.0
Revision date: 31 Jan 2025



Storage: Aliquot and store at -20°C. Avoid repeated freeze/thaw cycles.

UniProt Primary AC: O60603 ([UniProt](#), [ExPASy](#))

Gene Symbol: TLR2

GeneID: [7097](#)

OMIM: [246300](#)

NCBI Accession: NP_003255.2

HGNC: 11848

KEGG: hsa:7097

Ensembl: ENSG00000137462

String: [9606.ENSP00000260010](#)

Buffer: 0.01 M PBS, pH 7.4, containing 0.05% Proclin-300, 50% glycerol.

Note: This product is for research use only.

For Reference Only