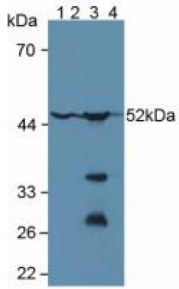
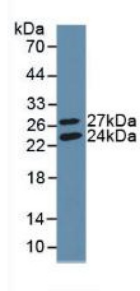


Glutathione Synthetase (GSS) Antibody

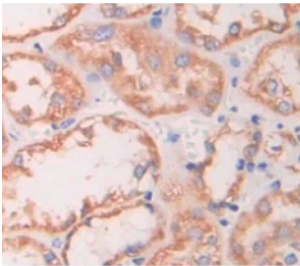
Catalogue No.: abx102149



Western blot analysis of (1) Human Liver Tissue, (2) Mouse Brain Tissue, (3) Mouse Kidney Tissue and (4) Rat Spleen Tissue.



Western blot analysis of recombinant Human GSS.



IHC-P analysis of Human Tissue, with DAB staining.

Polyclonal Antibody to Glutathione Synthetase (GSS).

Target: Glutathione Synthetase (GSS)

Clonality: Polyclonal

Reactivity: Human

Tested Applications: WB, IHC, IF/ICC

Host: Rabbit

Recommended dilutions: WB: 0.5-2 µg/ml, IHC: 5-20 µg/ml, IF/ICC: 5-20 µg/ml. Optimal dilutions/concentrations should be determined by the end user.

Conjugation: Unconjugated

Datasheet

Version: 1.0.0
Revision date: 24 Nov 2024



Immunogen:	GSS (Asp268-Val474)
Form:	Liquid
Purification:	Purified by antigen-specific affinity chromatography, followed by Protein A affinity chromatography.
Storage:	Aliquot and store at -20°C. Avoid repeated freeze/thaw cycles.
UniProt Primary AC:	P48637 (UniProt , ExPASy)
KEGG:	hsa:2937
String:	9606.ENSP00000216951
Buffer:	0.01 M PBS, pH 7.4, containing 0.05% Proclin-300, 50% glycerol.
Note:	This product is for research use only.

For Reference Only