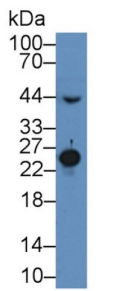
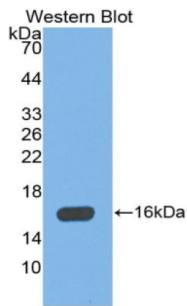


# Mannose Binding Lectin (MBL) Antibody

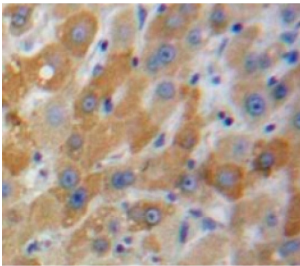
Catalogue No.: abx102170



Western blot analysis of Mouse Serum, using Mouse MBL Antibody (2 µg/ml) and HRP-conjugated Goat Anti-Rabbit antibody (abx400043, 0.2 µg/ml).



Western blot analysis of the recombinant protein.



IHC-P analysis of Liver tissue, with DAB staining.

Polyclonal Antibody to MBL2.

**Target:** Mannose Binding Lectin (MBL)

**Clonality:** Polyclonal

**Reactivity:** Mouse

**Tested Applications:** WB, IHC, IF/ICC

**Host:** Rabbit

**Recommended dilutions:** WB: 0.01-2 µg/ml, IHC: 5-20 µg/ml, IF/ICC: 5-20 µg/ml. Optimal dilutions/concentrations should be determined by the end user.

**Conjugation:** Unconjugated

# Datasheet

Version: 2.0.0  
Revision date: 13 Mar 2025



<b>Immunogen:</b>	MBL (Lys129-Asp244)
<b>Form:</b>	Liquid
<b>Purification:</b>	Purified by antigen-specific affinity chromatography, followed by Protein A affinity chromatography.
<b>Storage:</b>	Aliquot and store at -20°C. Avoid repeated freeze/thaw cycles.
<b>UniProt Primary AC:</b>	P41317 ( <a href="#">UniProt</a> , <a href="#">ExPASy</a> )
<b>Gene Symbol:</b>	MBL2
<b>GeneID:</b>	<a href="#">17194</a>
<b>KEGG:</b>	mmu:17195
<b>String:</b>	<a href="#">10090.ENSMUSP00000025797</a>
<b>Buffer:</b>	0.01 M PBS, pH 7.4, containing 0.05% Proclin-300, 50% glycerol.
<b>Note:</b>	THIS PRODUCT IS FOR RESEARCH USE ONLY. NOT FOR USE IN DIAGNOSTIC, THERAPEUTIC OR COSMETIC PROCEDURES. NOT FOR HUMAN OR ANIMAL CONSUMPTION.

For Reference Only