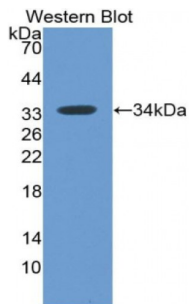
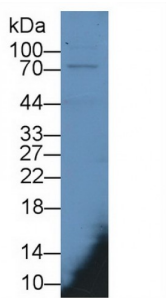


Interferon-Induced GTP-Binding Protein Mx1 (MX1) Antibody

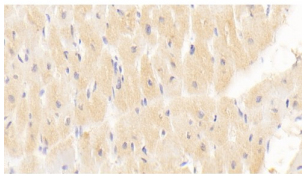
Catalogue No.: abx102174



Western blot analysis of recombinant human MX1.



Western blot analysis of Human lung lysate, using Mouse Anti-Human MX1 Antibody (2 µg/ml) and HRP-conjugated Rabbit Anti-Mouse antibody ([abx400002](#), 0.2 µg/ml).



IHC-P analysis of Human cardiac muscle tissue, using Mouse Anti-Human MX1 Antibody (20 µg/ml) and HRP-conjugated Rabbit Anti-Mouse antibody ([abx400002](#), 2 µg/ml).

MX1 Antibody is a Mouse Monoclonal against MX1.

Target: Interferon-Induced GTP-Binding Protein Mx1 (MX1)

Clonality: Monoclonal

Reactivity: Human

Tested Applications: WB, IHC, IF/ICC

Host: Mouse

Recommended dilutions: WB: 0.5-5 µg/ml, IHC: 5-20 µg/ml, IF/ICC: 5-20 µg/ml. Optimal dilutions/concentrations should be determined by the end user.

Conjugation: Unconjugated

Datasheet

Version: 1.0.0
Revision date: 01 Dec 2022



Immunogen:	abx068184 - Recombinant MX1 (Ser80-Leu342) expressed in E. coli
Isotype:	IgG _{2b} Kappa
Form:	Liquid
Purification:	Purified by Protein A and Protein G affinity chromatography.
Storage:	Aliquot and store at -20°C. Avoid repeated freeze/thaw cycles.
UniProt Primary AC:	P20591 (UniProt , ExPASy)
KEGG:	hsa:4599
String:	9606.ENSP00000381601
Buffer:	0.01 M PBS, pH 7.4, containing 0.05% Proclin-300, 50% glycerol.
Note:	This product is for research use only.

For Reference Only