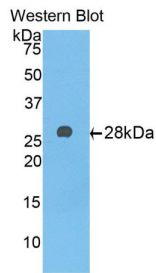
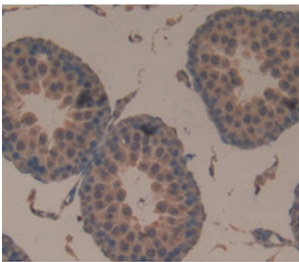


## Alpha-1-B Glycoprotein (A1BG) Antibody

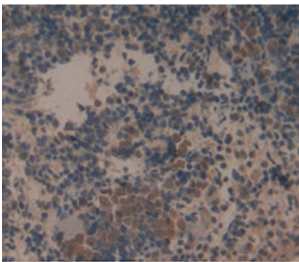
Catalogue No.: abx102208



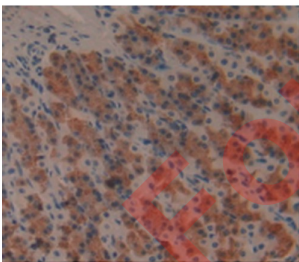
Western blot analysis of the recombinant protein.



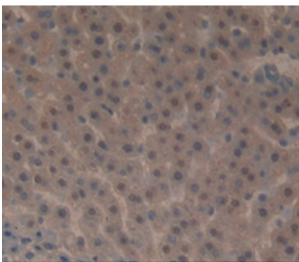
IHC-P analysis of Rat Testis Tissue, with DAB staining.



IHC-P analysis of Rat Spleen Tissue, with DAB staining.



IHC-P analysis of Rat Stomach Tissue, with DAB staining.



IHC-P analysis of Rat Liver Tissue, with DAB staining.

# Datasheet

Version: 3.0.0  
Revision date: 12 Mar 2025



Alpha-1-B-Glycoprotein Antibody is a Mouse Monoclonal against Alpha-1-B-Glycoprotein.

|                               |  |
|-------------------------------|--|
| <b>Target:</b>                | Alpha-1-B Glycoprotein (A1BG)  |
| <b>Clonality:</b>             | Monoclonal   |
| <b>Reactivity:</b>            | Rat  |
| <b>Tested Applications:</b>   | WB, IHC, IF/ICC  |
| <b>Host:</b>                  | Mouse  |
| <b>Recommended dilutions:</b> | WB: 0.01-5 µg/ml, IHC: 5-30 µg/ml, IF/ICC: 5-30 µg/ml. Optimal dilutions/concentrations should be determined by the end user.              |
| <b>Conjugation:</b>           | Unconjugated   |
| <b>Immunogen:</b>             | Trp22-Thr219   |
| <b>Isotype:</b>               | IgG <sub>2b</sub> Kappa  |
| <b>Form:</b>                  | Liquid   |
| <b>Purification:</b>          | Purified by Protein A and Protein G affinity chromatography.   |
| <b>Storage:</b>               | Aliquot and store at -20°C. Avoid repeated freeze/thaw cycles.   |
| <b>Buffer:</b>                | 0.01 M PBS, pH 7.4, containing 0.05% Proclin-300, 50% glycerol.  |
| <b>Note:</b>                  | THIS PRODUCT IS FOR RESEARCH USE ONLY. NOT FOR USE IN DIAGNOSTIC, THERAPEUTIC OR COSMETIC PROCEDURES. NOT FOR HUMAN OR ANIMAL CONSUMPTION. |