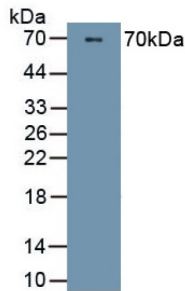
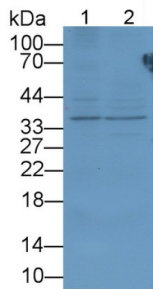


Peptidase Inhibitor 16 (PI16) Antibody

Catalogue No.: abx102279



WB analysis of recombinant Human PI16.



WB analysis of Lane 1: Human HeLa cell lysate and Lane 2: Human HepG2 cell lysates, using Peptidase Inhibitor 16 (PI16) Antibody (1 µg/ml).

Polyclonal Antibody to Peptidase Inhibitor 16 (PI16).

Target:	Peptidase Inhibitor 16 (PI16)
Clonality:	Polyclonal
Reactivity:	Human
Tested Applications:	WB, IHC, IF/ICC
Host:	Rabbit
Recommended dilutions:	WB: 0.01-2 µg/ml, IHC: 5-20 µg/ml, IF/ICC: 5-20 µg/ml. Optimal dilutions/concentrations should be determined by the end user.
Conjugation:	Unconjugated
Immunogen:	abx068448 - Recombinant PI16 (Leu28-Gly247) expressed in E. coli.
Form:	Liquid
Purification:	Purified by antigen-specific affinity chromatography, followed by Protein A affinity chromatography.
Storage:	Aliquot and store at -20°C. Avoid repeated freeze/thaw cycles.

Datasheet

Version: 5.0.0
Revision date: 23 Feb 2025



UniProt Primary AC: Q6UXB8 ([UniProt](#), [ExPASy](#))

Gene Symbol: PI16

GeneID: [221476](#)

KEGG: hsa:221476

String: [9606.ENSP00000362778](#)

Buffer: PBS, pH 7.4, containing 0.02% sodium azide, 50% glycerol.

Concentration: 1 mg/ml

Note: This product is for research use only.

For Reference Only