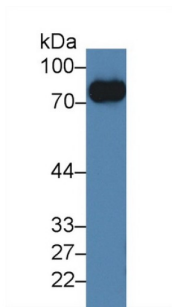
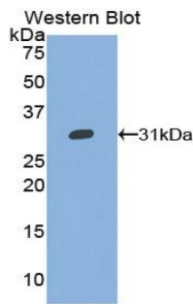


## Glycoprotein 5 (GP5) Antibody

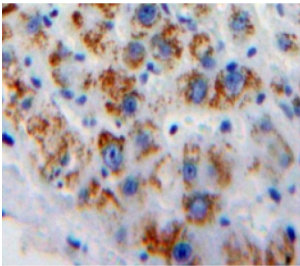
Catalogue No.: abx102367



Western blot analysis of Mouse Lymphocyte lysate, using Mouse GP5 Antibody (2 µg/ml) and HRP-conjugated Goat Anti-Rabbit antibody ([abx400043](#), 0.2 µg/ml).



Western blot analysis of the recombinant protein.



IHC-P analysis of Liver tissue, with DAB staining.

Polyclonal Antibody to Glycoprotein V, Platelet (GP5).

**Target:** Glycoprotein 5 (GP5)

**Clonality:** Polyclonal

**Reactivity:** Mouse

**Tested Applications:** WB, IHC, IF/ICC

**Host:** Rabbit

**Recommended dilutions:** WB: 0.5-2 µg/ml, IHC: 5-20 µg/ml, IF/ICC: 5-20 µg/ml. Optimal dilutions/concentrations should be determined by the end user.

**Conjugation:** Unconjugated

# Datasheet

Version: 2.0.0  
Revision date: 31 Dec 2024



|                      |  |
|----------------------|--|
| <b>Immunogen:</b>    | GP5 (Ser246-Glu485)  |
| <b>Form:</b>         | Liquid   |
| <b>Purification:</b> | Purified by antigen-specific affinity chromatography, followed by Protein A affinity chromatography. |
| <b>Storage:</b>      | Aliquot and store at -20°C. Avoid repeated freeze/thaw cycles.                                       |
| <b>Buffer:</b>       | 0.01 M PBS, pH 7.4, containing 0.05% Proclin-300, 50% glycerol.                                      |
| <b>Note:</b>         | This product is for research use only.   |

For Reference Only