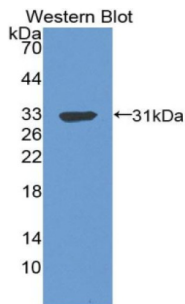
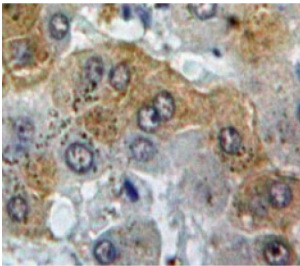


## C4b-Binding Protein Beta Chain (C4BPB) Antibody

Catalogue No.: abx102420



Western blot analysis of the recombinant protein.



IHC-P analysis of Liver tissue, with DAB staining.

Polyclonal Antibody to C4b-Binding Protein Beta Chain (C4BPB).

**Target:** C4b-Binding Protein Beta Chain (C4BPB)

**Clonality:** Polyclonal

**Reactivity:** Human

**Tested Applications:** WB, IHC, IF/ICC

**Host:** Rabbit

**Recommended dilutions:** WB: 0.5-2 µg/ml, IHC: 5-20 µg/ml, IF/ICC: 5-20 µg/ml. Optimal dilutions/concentrations should be determined by the end user.

**Conjugation:** Unconjugated

**Immunogen:** C4BPb (Ser18-Leu252)

**Form:** Liquid

**Purification:** Purified by antigen-specific affinity chromatography, followed by Protein A affinity chromatography.

**Storage:** Aliquot and store at -20°C. Avoid repeated freeze/thaw cycles.

# Datasheet

Version: 3.0.0

Revision date: 23 Dec 2024



**UniProt Primary AC:** P20851 ([UniProt](#), [ExPASy](#))

**Gene Symbol:** C4BPB

**GeneID:** [725](#)

**OMIM:** [120831](#)

**NCBI Accession:** NP\_000707.1, NM\_000716.3

**HGNC:** 1328

**KEGG:** hsa:725

**Ensembl:** ENSG00000123843

**String:** [9606.ENSP00000243611](#)

**Buffer:** 0.01 M PBS, pH 7.4, containing 0.05% Proclin-300, 50% glycerol.

**Note:** This product is for research use only.

For Reference Only