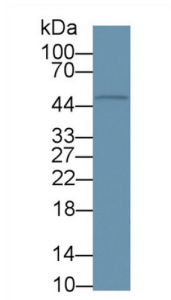
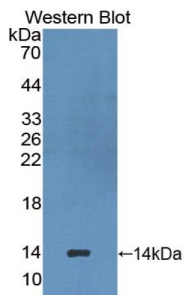


# Hepatitis A Virus Cellular Receptor 1 (HAVCR1) Antibody

Catalogue No.: abx102460



Western blot analysis of Mouse RAW264.7 cell lysate, using Dog Kim1 Antibody (1 µg/ml) and HRP-conjugated Goat Anti-Rabbit antibody ([abx400043](#), 0.2 µg/ml).



Western blot analysis of the recombinant protein.

Polyclonal Antibody to KIM-1 (KIM-1).

- Target:** Hepatitis A Virus Cellular Receptor 1 (HAVCR1)
- Clonality:** Polyclonal
- Reactivity:** Dog
- Tested Applications:** WB, IHC, IF/ICC
- Host:** Rabbit
- Recommended dilutions:** WB: 0.5-2 µg/ml, IHC: 5-20 µg/ml, IF/ICC: 5-20 µg/ml. Optimal dilutions/concentrations should be determined by the end user.
- Conjugation:** Unconjugated
- Immunogen:** Kim1 (Gln23-Glu125)
- Form:** Liquid
- Purification:** Purified by antigen-specific affinity chromatography, followed by Protein A affinity chromatography.
- Storage:** Aliquot and store at -20°C. Avoid repeated freeze/thaw cycles.

# Datasheet

Version: 2.0.0

Revision date: 05 Dec 2024



**Buffer:** 0.01 M PBS, pH 7.4, containing 0.05% Proclin-300, 50% glycerol.

**Note:** This product is for research use only.

For Reference Only